

# Rylee K at 17339 2 Street NW

BED	BATH	SQ FT	HOME STYLE	GARAGE TYPE
3	2.5	1708	FRONT ATTACHED GARAGE HOME	DOUBLE ATTACHED



COMMUNITY	
CONTACT	Jesse Richards 587.705.0522
BLOCK:	1
STAGE:	1A
LOT:	24
JOB:	MAR-0-035467

## Model Features

- This home checks all the boxes and more! This gorgeous home has no neighbor backing, 3 bedrooms, 2.5 bathrooms, second floor bonus room, walk through pantry and more!
- Bedrock Homes are smart! Enjoy controlling your Thermostat, video doorbell, front door lock and much more with our Included Smart Home System - free of charge to you!
- Open concept main floor with a huge island offering ample seating and prep space for your home chef!
- › Relax after a long day in your spacious great room complete with a sleek electric fireplace

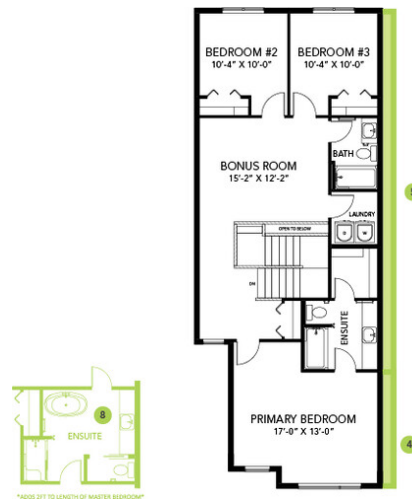
- Your primary oasis features a huge bedroom - perfect for a King-sized bed, standing shower with Tiled walls and 2 sinks in the ensuite - no more need to share with your partner!
- Second floor laundry room offers convenience. No more hauling laundry up and down flights of stairs in this home!
- 6-piece Samsung appliance package included stainless steel kitchen appliances, white front load washer and dryer.
- Sleek spindle railing on the main floor offers an open and airy feel.
- HRV provides a continuous air flow throughout the entire home to not only exhaust stale, humid air and odors from home but also reduce condensation, mold, mildew, etc.
- Triple pane low E argon filled energy star rated windows, contributing to cost and energy efficiency.

## Floor Plans

MAIN FLOOR



SECOND FLOOR



LEGAL BASEMENT SUITE

