


# Elena K at 17239 2 Street NW

BED	BATH	SQ FT	HOME STYLE	GARAGE TYPE
3	2.5	2088	FRONT ATTACHED GARAGE HOME	DOUBLE ATTACHED



COMMUNITY	
	
CONTACT	Daria Zaytseva 587.705.0522
BLOCK:	1
STAGE:	1A
LOT:	11
JOB:	MAR-0-035462

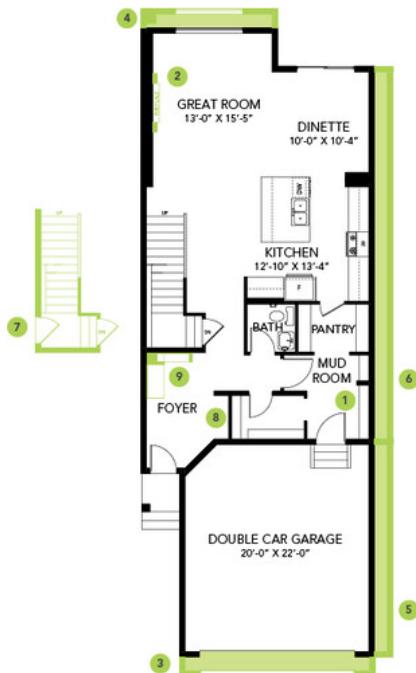
## Model Features

- This stunning single-family home features 2088 sq. ft., 3 Bedrooms, 2.5 bathroom, spacious second floor bonus room, convenient walk-through pantry and more!
- Side Entrance included for a potential future Legal Suite, with the Basement Ceiling Height upgraded to 9' for a more spacious feel.
- Bedrock Homes are smart! Enjoy controlling your Thermostat, video doorbell, front door lock and much more with our Included Smart Home System - free of charge to you!
- The Ensuite Bath features an upgraded large standing shower with Tiled walls and dual sinks.

- Ample countertop space complete with quartz.
- The walk-through pantry offers tons of storage space and is complete with a sleek frosted pantry door.
- Stunning 41" upper kitchen cabinets provide you with stunning visual appeal and more room for dishes and small appliances!
- Enjoy sitting back in your great room that boasts a linear electric fireplace - use the handy remote to change the flame colors to fit the mood.
- Enjoy the open airy concept with railing on both the main and continued upstairs on the second floor.
- HRV provides a continuous air flow throughout the entire home to not only exhaust stale, humid air and odors from home but also reduce condensation, mold, mildew, etc.
- Triple pane Low E Argon gas filled Energy Star rated windows contributing to increased energy efficiency and outside noise reduction.
- Complete 6-piece appliance package. Included Stainless Steel Samsung Kitchen appliances and white front load washer and dryer.

## Floor Plans

MAIN FLOOR



SECOND FLOOR



LEGAL BASEMENT SUITE

