

Seville K at 3523 6 Street NW

BED	BATH	SQ FT	HOME STYLE	GARAGE TYPE
3	2.5	1983	FRONT ATTACHED GARAGE HOME	TRIPLE ATTACHED



QUICK POSSESSION

BLOCK:	2	LOT:	50
STAGE:	9	JOB:	MPC-0-034890

COMMUNITY



SHOWHOME ADDRESS
Single Family Home with Front Attached Garage
523 - 37 Avenue NW

Single Family Home with Rear Detached Garage
451 - 37 Avenue NW

SHOWHOME HOURS
Monday - Thursday from 3 - 8PM
Weekend and Holidays from 12 - 5PM

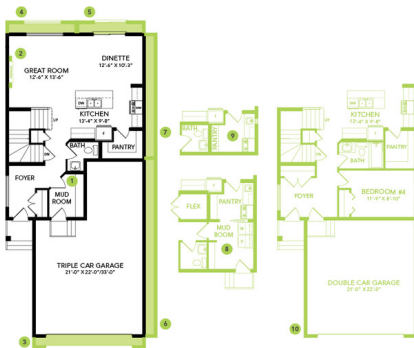
CONTACT
Diana Diduch
587-521-7744

Model Features

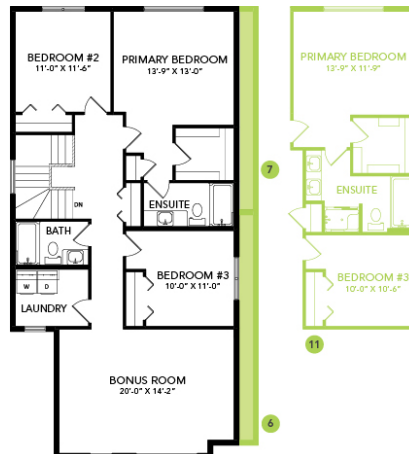
- A modern 4 bedroom, 3 full bathroom home on a traditional lot with large backyard.
- Backs onto lane for additional privacy.
- Provides the option of extra parking in the back.
- Main floor bedroom with full bathroom; Comes with upgraded shower with sliding glass doors.
- Side entry and 3 basement windows for future development.
- Upgraded 1.25" quartz in the kitchen, main floor bathroom and upstairs bathrooms.
- Attractive high quality luxury vinyl plank flooring on the main floor and wet areas. This easy to maintain flooring is waterproof, scratch proof and stain resistant.
- 21' x 22' garage with floor drain and sump pail.
- 9' foundation walls.
- Pot lights with 5000k LED bulbs throughout the home.
- Railing with metal spindles on the main floor.
- Upgraded 4-piece ensuite with dual sinks and shower with full wall tile and sliding glass doors.
- Convenient second floor laundry with ample storage and linen closet.
- Triple pane low E argon gas filled windows contribute to increased efficiency and outside noise reduction.
- Clutter free kitchen with 41' upper cabinets.

Floor Plans

MAIN FLOOR



SECOND FLOOR



LEGAL BASEMENT SUITE

