

Elena K at 677 Kinglet Blvd NW

BED	BATH	SQ FT	HOME STYLE	GARAGE TYPE
3	2.5	2060	FRONT ATTACHED GARAGE HOME	DOUBLE ATTACHED



QUICK POSSESSION

BLOCK:	8	LOT:	10
STAGE:	8	JOB:	KNG-0-035443

COMMUNITY

Kinglet
BY BIG LAKE

SHOWHOME ADDRESS

5807 Raven
Crescent NW

SHOWHOME HOURS

Monday - Thursday
from 3 - 8PM
Weekends and
Holidays
from 12 - 5PM

CONTACT

Ryan James
825-512-1050

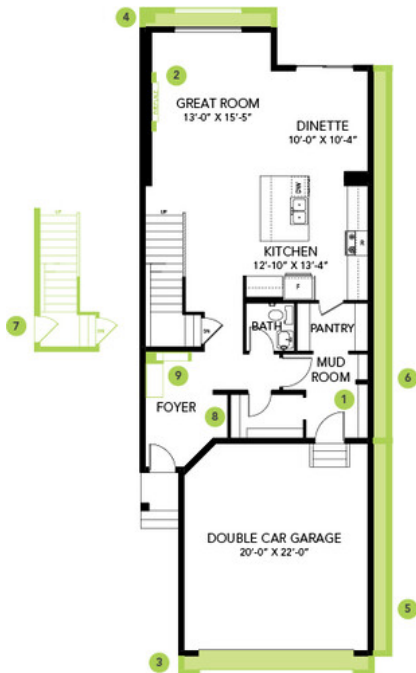
Model Features

- This stunning home features 3 bedrooms, 2.5 bathrooms and the bonus room upstairs
- Open floorplan in great room, dining, and kitchen. Features elegant quartz countertops throughout the home.
- Black cabinets throughout (Kitchen Craft Textured Ore), finished to the ceiling in the kitchen, with modern silver hardware Floor to ceiling linear electric fireplace gives the great room an impressive focal point.

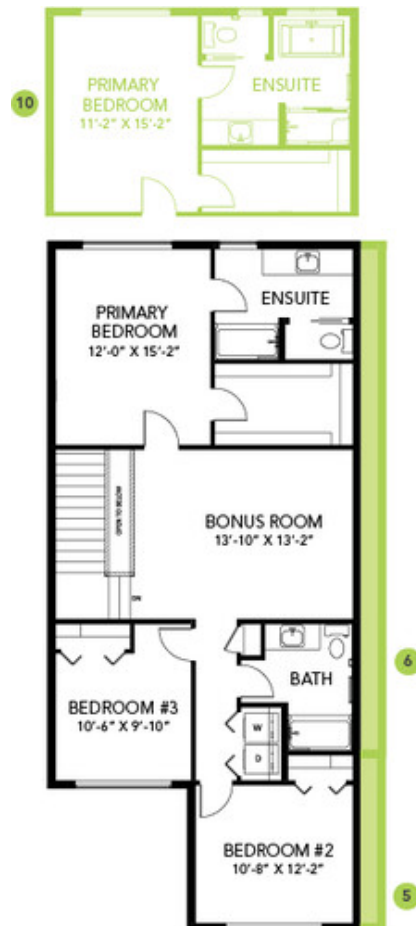
- Open spindle railing from the main to the second floor
- Enjoy your primary suite retreat with this upgraded 4 piece complete with dual sinks.
- Durable and stylish luxury vinyl plank flooring on the main floor, bathrooms, and laundry room. Advanced wear and stain protection carpet with 35 oz. weight and 8 lbs. under pad
- Splatter texture Ceilings throughout the house
- Has a side entrance for a future legal suite with 9' ceilings in the basement.
- Smart Home - What does it do? Almost everything! Ask it to control the Ecobee Thermostat, Lock the door using a smart lock and more!
- Triple pane low E argon filled energy star rated windows, contributing to cost and energy efficiency.
- HRV provides a continuous air flow throughout the entire home to not only exhaust stale, humid air and odors from home but also reduce condensation, mold, mildew, etc.
- 6-piece stainless steel Samsung appliances with high efficiency front load washer/dryer

Floor Plans

MAIN FLOOR



SECOND FLOOR



LEGAL BASEMENT SUITE

