

Priya P at 23 Ashbury Crescent

BED	BATH	SQ FT	HOME STYLE
3	2.5+	2218	FRONT ATTACHED GARAGE HOME

GARAGE TYPE

DOUBLE ATTACHED



AVAILABLE

BLOCK:	31	LOT:	12
STAGE:	12	JOB:	JSP-0-035489

COMMUNITY

Jesperdale
in ASPEN GLEN

SHOWHOME ADDRESS

3 Ashbury Crescent

SHOWHOME HOURS

Monday - Thursday
from 3 - 8PM
Weekend and
Holidays
from 12 - 5PM

CONTACT

Mike Marsh
587.802.1334

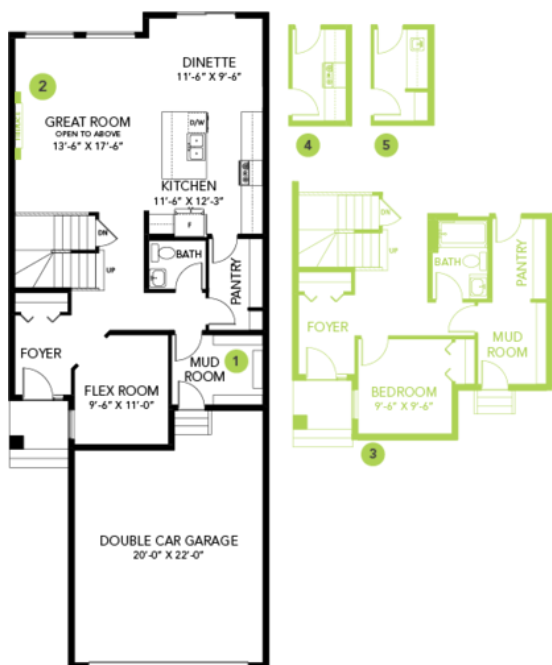
Model Features

- Pie-Shaped Lot: Steps from Park and running trails
- Walkthrough Pantry and Mudroom
- Main floor Flex room with 3 Bedrooms, 2.5 bathrooms and bonus room upstairs

- 20 x 22 Attached double car garage
- 41" Kitchen upper cabinets
- 9' Ceilings on Main Floor
- 6 pc Samsung Stainless Steel Appliances with white high efficiency front load washer/dryer
- Upgraded Kitchen Backsplash
- 5 piece ensuite with dual vanities
- LED pot lights throughout
- Upgraded Siding to a premium colour
- Electric Fireplace in great room
- Paint Grade Railing with straight metal spindles
- Luxury vinyl plank throughout
- Quartz throughout
- Smart Home package
- Upstairs laundry
- Open to below great room
- Triple pane, Low-E argon filled Energy Star rated windows
- Heat recovery ventilator
- Upgraded overhead garage door

Floor Plans

MAIN FLOOR



SECOND FLOOR

