

Remi H at 19 Ashbury Crescent

BED	BATH	SQ FT	HOME STYLE
3	2.5+	2395	FRONT ATTACHED GARAGE HOME

GARAGE TYPE
DOUBLE ATTACHED



COMMUNITY



SHOWHOME ADDRESS 3 Ashbury Crescent

SHOWHOME HOURS Monday - Thursday from 3 - 8PM
Weekend and Holidays from 12 - 5PM

CONTACT Mike Marsh
587.802.1334

BLOCK:	31	LOT:	10
STAGE:	12	JOB:	JSP-0-035487

Model Features

- Pie-Shaped lot; Steps from parks and running trails
- Open to above staircase
- Flex/office on the main floor, 3 Bedrooms, 2.5 bathrooms and large bonus room upstairs

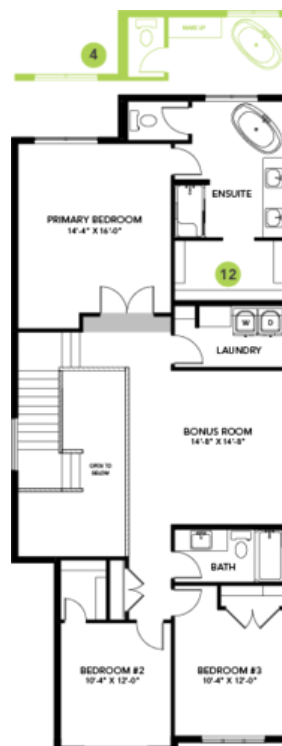
- 22x22 Attached Double car Garage
- Walkthrough pantry and mudroom
- 9' Ceilings on the main floor
- 6-piece Samsung Stainless Steel Appliances with white high efficiency front load washer/dryer
- Upgraded kitchen backsplash
- 4-Piece Ensuite with a water closet and dual sinks
- Coffered ceiling in kitchen
- Upgraded siding to a premium colour
- Electric fireplace in great room
- Paint Grade Railing with straight metal spindles
- Luxury vinyl plank throughout
- Quartz throughout
- Smart Home package
- Upstairs laundry
- Upgraded overhead garage door
- 41" Kitchen upper cabinets
- LED pot lights throughout
- Triple pane, Low-E argon filled Energy Star rated windows

Floor Plans

MAIN FLOOR



SECOND FLOOR



LEGAL BASEMENT SUITE

