

Athena FC at 12 Chambery Cres

BED	BATH	SQ FT	HOME STYLE	GARAGE TYPE
3+	2.5+	1660	LANED HOME	REAR DETACHED



QUICK POSSESSION

BLOCK:	2	LOT:	55
STAGE:	1	JOB:	CHE-0-035314

COMMUNITY



CONTACT

Wende Campbell
587.854.3882

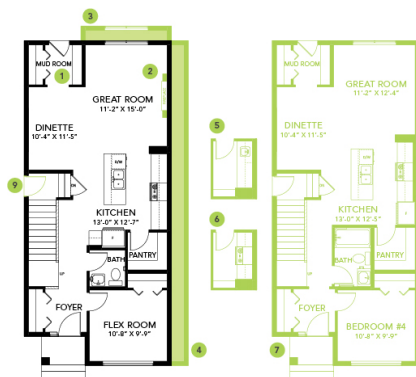
Model Features

- This beautiful home features 1660 sq ft, 4 bedrooms and 3 full bathrooms!
- The main floor bedroom can also be utilized as a home office. It is complete with a full bathroom that features a tiled shower.
- Open concept main floor connects the kitchen, great room, and dining area.
- Convenient side entry, perfect for a potential income suite
- Linear electric fireplace in the great room

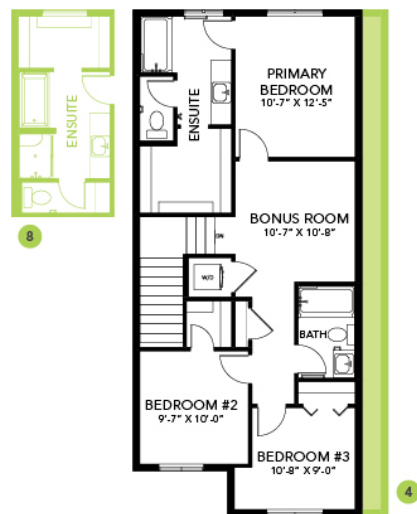
- 9' ceilings on the main floor and basement
- Upstairs you will find three bedrooms, a bonus room and laundry.
- Close the door to your primary suite and enjoy your own ensuite with dual sinks and a tiled shower
Splatter texture Ceilings throughout the house.
- 6-piece Samsung appliance package included stainless steel kitchen appliances, white front load washer and dryer.
- HRV provides a continuous air flow throughout the entire home to not only exhaust stale, humid air and odors from home but also reduce condensation, mold, mildew, etc.
- Outback you will find a parking pad with curbs for two vehicles. Ask us about building your garage or do it when you are ready!
- Smart Home - What does it do? Almost everything! Ask it to control the Ecobee Thermostat, Lock the door using a smart lock and more.
- Triple pane low E argon filled energy star rated windows, contributing to cost and energy efficiency.

Floor Plans

MAIN FLOOR



SECOND FLOOR



LEGAL BASEMENT SUITE

