

Athena FF at 14 Chambery Cres

BED	BATH	SQ FT	HOME STYLE	GARAGE TYPE
3+	2.5+	1660	LANED HOME	REAR DETACHED



COMMUNITY



CONTACT

Wende Campbell
587.854.3882

BLOCK: 2 LOT: 54

STAGE: 1 JOB: CHE-0-035313

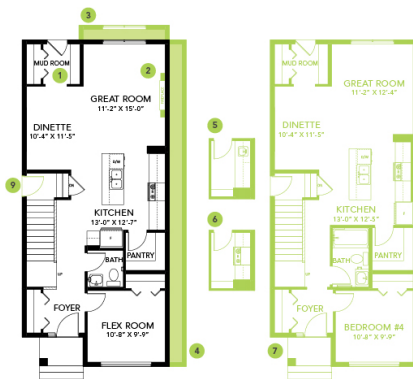
Model Features

- If you love to explore but work life keeps you busy, Cherot offers you the ability to walk out your front door and discover the vast nature surrounding your community.
- This beautiful home features 1660 sq ft, 4 bedrooms and 3 full bathrooms!
- Spacious corner pantry to store your groceries and small appliances.
- Open spindle railing on the main floor
- Convenient side entry, perfect for quick access to the basement or a future suite Sleek linear electric fireplace in the great room

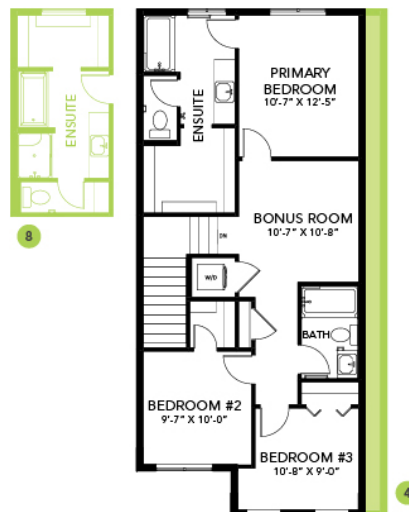
- You will be wowed by the 9' main floor and basement ceilings!
- Second floor laundry complete with front load washer and dryer
- The primary suite is complete with a walk-in closet and a luxurious ensuite bathroom - 2 sinks!
- Triple pane low E argon filled energy star rated windows, contributing to cost and energy efficiency.
- Stainless Steel Samsung kitchen appliances included.
- HRV provides a continuous air flow throughout entire home to not only exhaust stale, humid air and odors from home but also reduce condensation, mold, mildew, etc.
- Out back you will find a parking pad with curbs for two vehicles. Ask us about building your garage or do it when you are ready!
- Smart Home - What does it do? Almost everything! Ask it to control the Ecobee Thermostat, Lock the door using a smart lock and more.

Floor Plans

MAIN FLOOR



SECOND FLOOR



LEGAL BASEMENT SUITE

