

Athena FC at 56 Chambery Cres

BED	BATH	SQ FT	HOME STYLE	GARAGE TYPE
3+	2.5+	1660	LANED HOME	REAR DETACHED



COMMUNITY 

CONTACT	Wende Campbell 587.854.3882
BLOCK:	2
STAGE:	1
LOT:	33
JOB:	CHE-0-035302

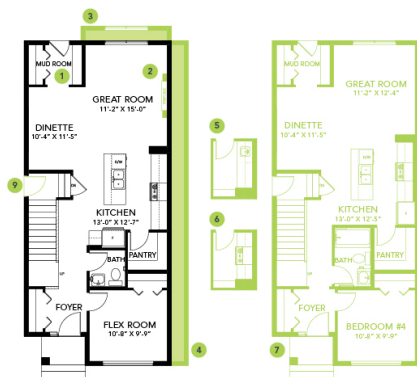
Model Features

- If you love to explore but work life, has you busy, Cherot offers you the ability to walk out your front door and discover the vast nature surrounding your community.
- This beautiful corner lot home features 1665 sq ft, 4 bedrooms and 3 full bathrooms!
- Spacious corner pantry to store your groceries and small appliances.
- Open spindle railing on the main floor
- Convenient side entry, perfect for quick access to the basement or a future suite Sleek linear electric fireplace in the great room

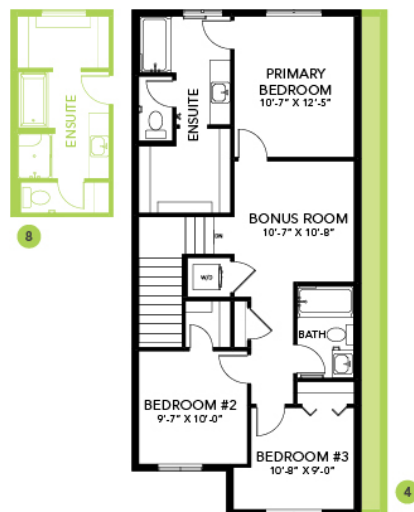
- You will be wowed by the 9' main floor and basement ceilings!
- Second floor laundry complete with front load washer and dryer.
- The primary suite is complete with a walk-in closet and a luxurious ensuite bathroom - 2 sinks and a tiled shower
- This home comes with a rear deck and a 20'x20' garage.
- Splatter ceilings throughout the house
- HRV provides a continuous air flow throughout the entire home to not only exhaust stale, humid air and odors from home but also reduce condensation, mold, mildew, etc.
- Outback you will find a parking pad with curbs for two vehicles. Ask us about building your garage or do it when you are ready!
- Smart Home - What does it do? Everything! Ask it to control the Ecobee Thermostat, Lock the door using a smart lock and more.
- Triple pane low E argon filled energy star rated windows; contributing to cost and energy efficiency.
- Stainless Steel Samsung kitchen appliances included.

Floor Plans

MAIN FLOOR



SECOND FLOOR



LEGAL BASEMENT SUITE

