

# Remi K at 254 Canter Wynd

BED	BATH	SQ FT	HOME STYLE
3	2.5+	2395	FRONT ATTACHED GARAGE HOME

GARAGE TYPE  
DOUBLE ATTACHED



QUICK POSSESSION

BLOCK:	5	LOT:	6
*****			
STAGE:	1	JOB:	CBR-0-035358

COMMUNITY



SHOWHOME ADDRESS	Single Family Home 374 Canter Wynd
SHOWHOME HOURS	Monday - Thursday from 3 - 8PM Fridays: By Appointment Weekend and Holidays from 12 - 5PM

CONTACT  
Doug Jensen  
587.906.3467

# Model Features

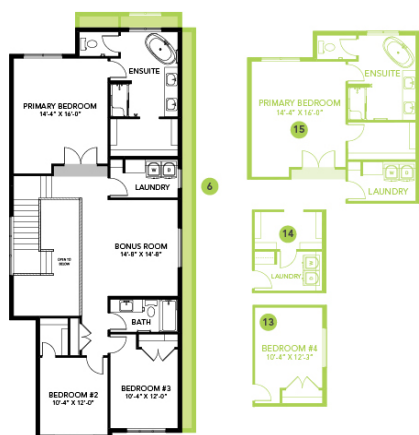
- Samsung Appliances in stainless steel, including front load washer and dryer in white finish
- Electric 50" linear fireplace
- Smart Home package
- Flex room on main floor
- Metal spindle railing
- 9' Main floor
- Walk-through pantry
- Open to above foyer
- 3 bedrooms and bonus room
- Dual sinks in ensuite
- Tiled shower in ensuite
- Luxury vinyl plank flooring on main floor and second floor laundry and bathrooms
- Advanced wear and stain protection carpet with 35 oz weight and 8lb underpad

# Floor Plans

MAIN FLOOR



SECOND FLOOR



LEGAL BASEMENT SUITE

