

Athena K at 119 Canter Wynd

BED	BATH	SQ FT	HOME STYLE	GARAGE TYPE
4	3	1660	LANED HOME	REAR DETACHED



COMMUNITY



SHOWHOME
ADDRESS

Single Family
Home
374 Canter Wynd

SHOWHOME
HOURS

Monday - Thursday
from 3 - 8PM
Fridays: By
Appointment

Weekend and Holidays
from 12 - 5PM

CONTACT

Doug Jensen
587.906.3467

BLOCK: 2

STAGE: 1

LOT: 5

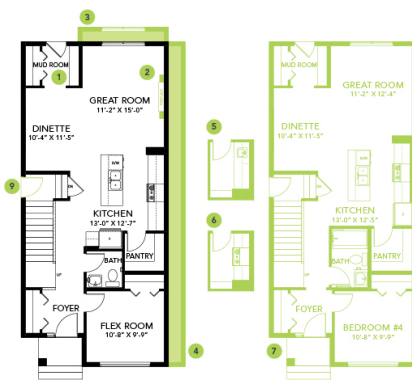
JOB: CBR-0-035343

Model Features

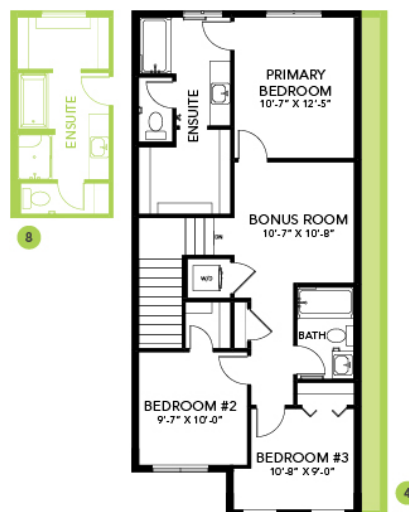
- Built with 3 bedrooms and a central bonus room. Ensuite has a walk-in shower with tiled walls, 19x20 garage included.
- A fourth bedroom on the main floor with tiled walls, walk-in shower, and kitchen with a walk-in pantry.
- Built with a side entry to the basement, 9.4 ft foundation walls and 3 pc. bath rough ins for future development.
- Six Samsung appliances. Four stainless steel kitchen appliances, and white finish front load washer and dryer.
- Easy maintenance luxury vinyl flooring in the main floor, second floor laundry and bathrooms.
- Advanced wear and stain protection carpet w/ 35 oz. weight and 8 lbs. under pad.
- Completed with 96% high efficiency furnace system, also equipped with a humidifier, and HRV (Heat Recovery Ventilator).
- Save money on electricity with advanced triple pane low E-Argon filled Energy Star rated windows and doors for high energy efficiency, and minimal outside noise.
- Weather resistant precast concrete exterior steps that require no maintenance, and the exterior walls and ceilings are vapor sealed.
- Low VOC and maintenance free quartz countertop in the main kitchen, and second floor bathrooms with undermount sinks.
- Highly efficient, energy saving LED light bulbs in all light fixtures on the ceiling.

Floor Plans

MAIN FLOOR



SECOND FLOOR



LEGAL BASEMENT SUITE

