

Remi H at 311 Canter Wynd

Get Cash Back

BED	BATH	SQ FT	HOME STYLE	GARAGE TYPE
3	2.5+	2395	FRONT ATTACHED GARAGE HOME	DOUBLE ATTACHED



QUICK POSSESSION

BLOCK:	4	LOT:	30
=====			
STAGE:	1	JOB:	CBR-0-035357

COMMUNITY



SHOWHOME ADDRESS	Single Family Home 374 Canter Wynd
------------------	---------------------------------------

SHOWHOME HOURS	Monday - Thursday from 3 - 8PM Fridays: By Appointment Weekend and Holidays from 12 - 5PM
----------------	-------------------------------------------------------------------------------------------------------

CONTACT	Doug Jensen 587.906.3467
---------	-----------------------------

Model Features

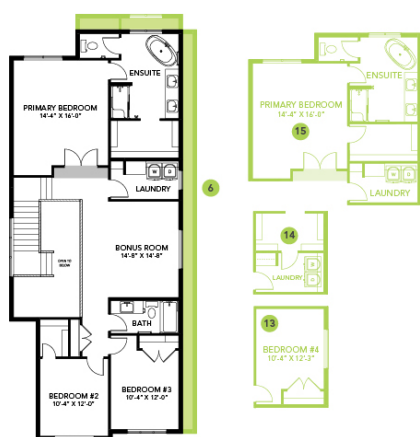
- Samsung Appliances in Stainless Steel, including front load washer and dryer in white finish
- Electric 50" Linear Fireplace
- Smart Home package
- Walk through pantry
- Metal spindle railing
- 9' Main Floor
- Flex room on main
- Open to above foyer
- 3 bedrooms + bonus room
- 2nd sink in En Suite vanity
- 4 piece Ensuite with tiled shower surround and free standing soaker tub
- Luxury Vinyl Plank flooring on main floor and second floor laundry and bathrooms
- Advanced wear and stain protection carpet w/35 oz weight and 8lb underpad

Floor Plans

MAIN FLOOR



SECOND FLOOR



LEGAL BASEMENT SUITE

