

Elena H at 319 Canter Wynd

Get Cash Back

BED	BATH	SQ FT	HOME STYLE
3	2.5	2260	FRONT ATTACHED GARAGE HOME

GARAGE TYPE

DOUBLE ATTACHED



QUICK POSSESSION

BLOCK:	4	LOT:	28
STAGE:	1	JOB:	CBR-0-035356

COMMUNITY



SHOWHOME ADDRESS	Single Family Home 374 Canter Wynd
------------------	---------------------------------------

SHOWHOME HOURS	Monday - Thursday from 3 - 8PM Fridays: By Appointment
----------------	---

Weekend and Holidays
from 12 - 5PM

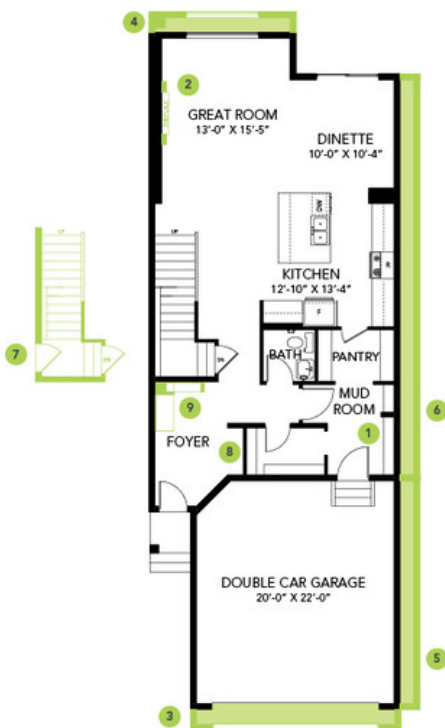
CONTACT	Doug Jensen 587.906.3467
---------	-----------------------------

Model Features

- Samsung Appliances in stainless steel, including front load washer and dryer in white finish
- Electric 50" linear fireplace
- Smart Home package
- Walk-through pantry
- Metal spindle railing
- 9' Main floor
- Side entry
- 9' Basement
- 3 bedrooms and a bonus room
- Dual sinks in the ensuite
- 4-piece ensuite with tiled shower surround
- Luxury vinyl plank flooring on the main floor and second floor laundry and bathrooms
- Advanced wear and stain protection carpet with 35 oz weight and 8lb underpad

Floor Plans

MAIN FLOOR



SECOND FLOOR



LEGAL BASEMENT SUITE

