

# Priya K at 323 Canter Wynd

Get Cash Back

BED	BATH	SQ FT	HOME STYLE
3	2.5+	2218	FRONT ATTACHED GARAGE HOME

GARAGE TYPE

DOUBLE ATTACHED



QUICK POSSESSION

BLOCK: 4

STAGE: 1

LOT: 27

JOB: CBR-0-035355

COMMUNITY



SHOWHOME ADDRESS Single Family Home  
374 Canter Wynd

SHOWHOME HOURS Monday - Thursday  
from 3 - 8PM  
Fridays: By Appointment  
Weekend and Holidays  
from 12 - 5PM

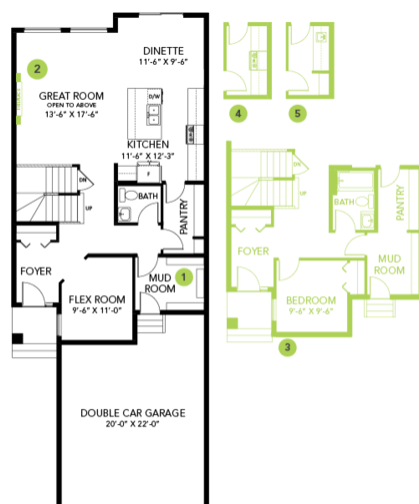
CONTACT Doug Jensen  
587.906.3467

# Model Features

- A beautiful new community with shopping close by and easy access to Highways 16, 21 and the Anthony Henday.
- Every Bedrock Home comes complete with a modern smart home technology system (Smart Home Hub), Ecobee thermostat, Ring video doorbell & Weiser Halo Wi-Fi Smart keyless lock with touch screen.
- This home has a stunning open to above great room with lots of windows for natural light.
- Walk-through pantry and large island.
- Flex room on the main floor.
- Paint grade and metal spindle railing.
- All Bedrock homes include a complete appliance package that includes: Stainless Steel kitchen appliances including a 28 cu. Ft. French door fridge with bottom pull out freezer and ice machine, a 5 burner range, an OTR microwave and a built-in dishwasher.
- The laundry is high efficiency front load washer and dryer in white.
- 50" Linear Ortech LED electric fireplace.
- 3 bedrooms on the second level, and a large central bonus room.
- 5-Piece Primary ensuite bath features a stunning tiled shower and dual vanity.
- Energy efficient features include triple pane, Low-E, argon gas filled, Energy Star rated windows, heat recovery ventilator, 96.5% efficient and direct vented furnace.
- Quartz counters in the Kitchen and all Bathrooms.
- Luxury Vinyl Plank flooring throughout the main floor and all "wet" areas
- Stain Proof Carpeting by Mohawk.
- Over \$46K in included designer options.

## Floor Plans

MAIN FLOOR



SECOND FLOOR

