

# Remi F at 327 Canter Wynd

Get Cash Back

BED	BATH	SQ FT	HOME STYLE	GARAGE TYPE
3	2.5+	2395	FRONT ATTACHED GARAGE HOME	DOUBLE ATTACHED



QUICK POSSESSION

BLOCK:	4	LOT:	26
STAGE:	1	JOB:	CBR-0-035354

COMMUNITY



SHOWHOME ADDRESS      Single Family Home  
374 Canter Wynd

SHOWHOME HOURS      Monday - Thursday  
from 3 - 8PM  
Fridays: By Appointment

Weekend and Holidays  
from 12 - 5PM

CONTACT      Doug Jensen  
587.906.3467

## Model Features

- Built with 3 bedrooms on the upper level and a central bonus room. Ensuite has a dual sink, a free-standing soaker tub and separate walk-in shower with glass sliding doors.

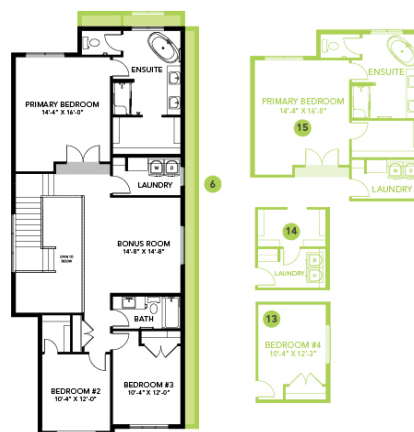
- Open to above foyer/main floor hall adds to a welcoming vibe of the home. Also built with flex room for office space or accommodation
- Upgrades include 41" upper kitchen cabinets, added fireplace, paint grade railing with metal spindle railing in the main and second floor and splatter texture ceiling.
- Six Samsung stainless steel kitchen appliances and white finish front load washer and dryer with advanced moisture drying sensor.
- High efficiency energy saving LED light bulbs in all light fixtures on the ceiling.
- Low VOC and maintenance free quartz countertop in the main kitchen, and second floor bathrooms with undermount sinks.
- Double compartment stainless steel under mount kitchen sink, complete with a chrome finish faucet with pull down sprayer, and 1.5gpm aerator.
- 41" tall bathroom mirrors mounted on top of the countertop, tile around tub/shower units and shower enclosures to the ceiling.
- Equipped with a carbon monoxide detector, high efficiency furnace, humidifier and HRV (Heat Recovery Ventilator).
- Advanced wear and stain protection carpet w/ 35 oz. weight and 8 lbs. under pad
- Easy maintenance luxury vinyl flooring in the main floor, second floor laundry and bathrooms
- Weather resistant precast concrete exterior steps that require no maintenance. Exterior walls and ceilings are vapor sealed.

## Floor Plans

MAIN FLOOR



SECOND FLOOR



LEGAL BASEMENT SUITE

