

Kiera F at 2647 5 Ave SW

BED	BATH	SQ FT	HOME STYLE
3	2.5	1991	FRONT ATTACHED GARAGE HOME

GARAGE TYPE
DOUBLE ATTACHED



COMMUNITY



SHOWHOME ADDRESS
Single Family Home
303-29 St SW

SHOWHOME HOURS
Monday - Thursday
from 3 - 8PM
Fridays: By
Appointment
Weekend and Holidays
from 12 - 5PM

CONTACT



Doug Jensen
587.805.2131

BLOCK: 10

STAGE: 5

LOT: 116

JOB: ALC-0-036019

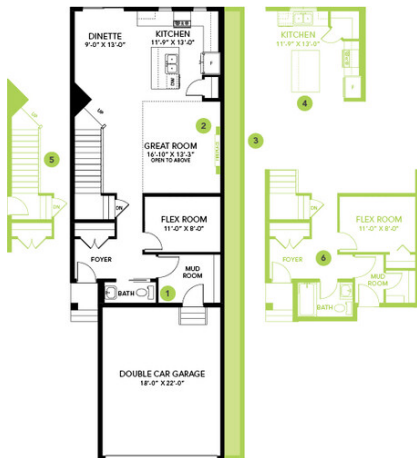
Model Features

The Kiera model invites you into a charming foyer area leading to a flex room, half bathroom, and mudroom that is right off the double car garage. An L-shaped kitchen at the rear of the home overlooks the spacious great room and dining area, perfect for hosting your family and friends. As you reach the second floor, you'll discover a bridge leading over the great room towards the bonus room. The upstairs also features two secondary bedrooms, a full bathroom, laundry space and large primary bedroom with ensuite and walk-in closet.

- Main floor flex room
- Central Bonus Room
- Open to above great room
- Second floor bridge
- Optional: 4-Piece ensuite
- Optional: Drop Zone
- Optional: Vaulted ceiling over the great room

Floor Plans

MAIN FLOOR



SECOND FLOOR



LEGAL BASEMENT SUITE

