



BEDROCK
HOMES

JULIA H

1713 SQ FT
26 Linden Place



LIBERTY LANDING SHOWHOME

2 Legacy Road, Red Deer

403.814.1005

libertylanding@bedrockhomes.ca

Job # LBY-0-035168
Lot 2, Block 11, Plan 212-2878

DETAILS

- Located in the beautiful, growing community of Liberty Landing. Walking trails, green spaces and a playground creates a perfect environment for any family. Close to grocery stores, shopping centers, farmers markets and so much more.
- Living in Liberty Landing, your yearly property taxes are lower than other communities. Over your 25 year mortgage, you will be saving over \$30 000 just by living in this amenity focused community!
- The Julia is a stunning, open concept floorplan with abundant storage space.
- Enter the spacious mudroom with a convenient built-in bench and coat hooks along with additional storage for extra jackets, and continue through the convenient walk through pantry to the kitchen.
- The designer kitchen features an oversized island with full eating bar, plenty of quartz countertops, ceiling height cabinets, pots and pans drawers and luxury vinyl plank flooring, all in a modern warm grey and white color palette.
- Patio doors off the dinette and large triple pane windows throughout, flood the home with natural light.
- Upstairs a spacious bonus room separates the primary suite from the secondary bedrooms.
- Generous bedrooms with good sized closets, and a full sized laundry room with linen storage make this the perfect floorplan for busy families.
- The primary suite is complete with a huge walk-in closet, and a full sized ensuite with a quartz vanity and plenty of storage.
- Included with the home is a Brilliant Smart Home System, to easily manage all of your smart home features from one app, plus a full six piece appliance package.
- The 24' long garage is the perfect spot to park full length SUV's, trucks, or give you some extra storage space.

BUILT TO LAST \ \ **BEDROCKHOMES.CA**

SPEC 2022 - Bedrock Homes Ltd. reserves the right to modify floorplans, renderings, elevations and features in a continuing effort to improve product quality. Floorplans, specifications & prices are subject to change without notice. Errors & omissions exempt.



BEDROCK
HOMES

JULIA H

1713 SQ FT
26 Linden Place



LIBERTY LANDING SHOWHOME

2 Legacy Road, Red Deer

403.814.1005

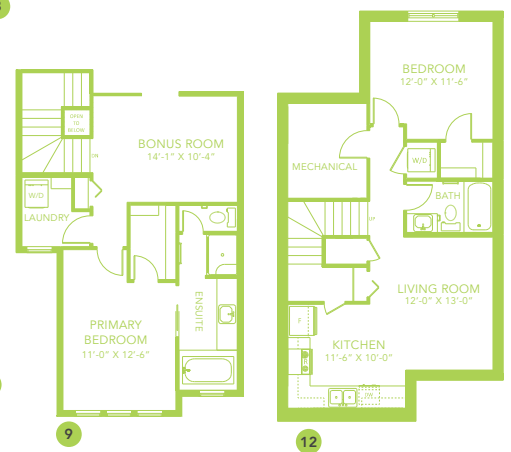
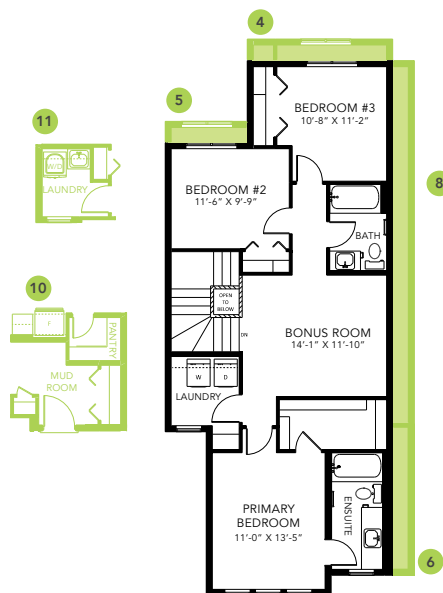
libertylanding@bedrockhomes.ca

Job # LBY-0-035168

Lot 2, Block 11, Plan 212-2878



Main Floor
774 SQ FT



Second Floor
939 SQ FT

BUILT TO LAST \ BEDROCKHOMES.CA

SPEC 2022 - Bedrock Homes Ltd. reserves the right to modify floorplans, renderings, elevations and features in a continuing effort to improve product quality. Floorplans, specifications & prices are subject to change without notice. Errors & omissions exempt.