



**BEDROCK**  
HOMES

# SASHA B

1564 SQ FT  
47 Lake Street



## LIBERTY LANDING SHOWHOME

2 Legacy Road, Red Deer  
403.814.1005  
libertylanding@bedrockhomes.ca

Job # LBY 5143  
Lot 125, Block 6, Plan TBA

### DETAILS

- Located in the beautiful growing community of Liberty Landing. With walking trails, green spaces, and a play ground creates a perfect environment for any family. Close to grocery stores, shopping centers, farmers markets and so much more.
- Living in Liberty Landing your yearly property taxes are lower than other communities. Over your 25 year mortgage, you will be saving at least \$32,750 just by living in this amenity-focused community!
- The Sasha is beautiful, open concept laned home. Large front foyer and rear mudroom allowing loads of storage and comfort no matter how you enter the home.
- This home has a great designer kitchen, with ceiling height cabinets, a pots & pan drawer, and a huge island with an eating bar. Fall in love with the stunning grey quartz countertops, white backsplash and sleek grey cabinets.
- Lovely open to below staircase.
- Good sized primary bedroom at the front of the home. Enjoy the lovely ensuite with dual undermounted sinks and quartz countertops. Along with a large walk in closet off the ensuite.
- Central bonus room between primary suite and secondary bedrooms gives added privacy.
- Secondary bedrooms are located at the back of the home with big windows, one of the bedrooms has a walk in closet as well.
- Laundry is on the second floor making everyone's lives easier.

SASHA B

BUILT TO LAST \ \ **BEDROCKHOMES.CA**

SPEC 2022 - Bedrock Homes Ltd. reserves the right to modify floorplans, renderings, elevations and features in a continuing effort to improve product quality. Floorplans, specifications & prices are subject to change without notice. Errors & omissions exempt.

# SASHA B

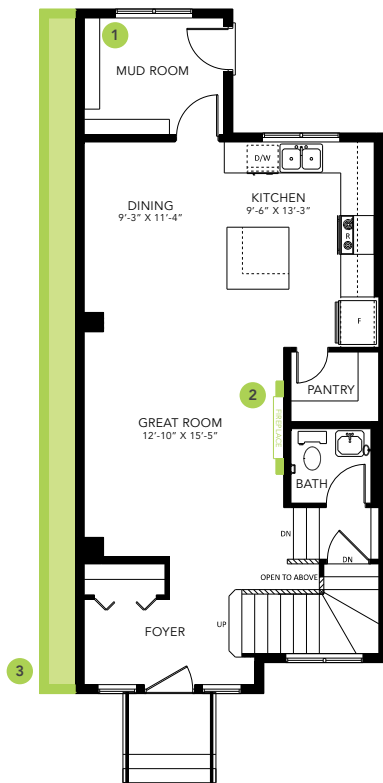
1564 SQ FT  
47 Lake Street



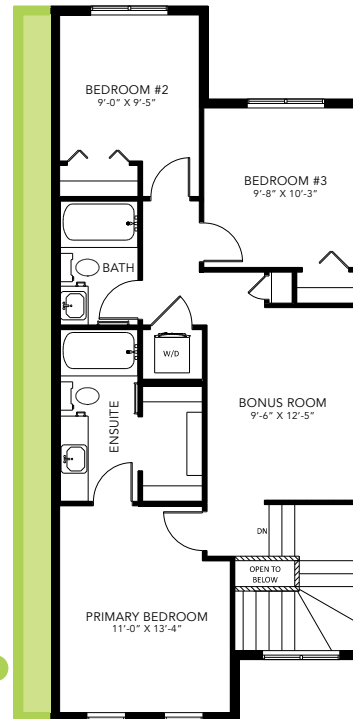
## LIBERTY LANDING SHOWHOME

2 Legacy Road, Red Deer  
403.814.1005  
libertylanding@bedrockhomes.ca

Job # LBY 5143  
Lot 125, Block 6, Plan TBA



**Main Floor**  
784 SQ FT



**Second Floor**  
780 SQ FT

SASHA B