



BEDROCK
HOMES

ELENA B

2088 SQ FT
65 Memorial Parkway



LIBERTY LANDING SHOWHOME

2 Legacy Road, Red Deer
403.814.1005
libertylanding@bedrockhomes.ca

Job # LBY-0-034726
Lot 13, Block 10, Plan 202-003

DETAILS

- Located in the beautiful growing community of Liberty Landing. Walking trails, green spaces and a playground just outside the door creates a perfect environment for any family. Close to grocery stores, shopping centers, farmers markets and so much more.
- Living in Liberty Landing your yearly property taxes are lower than other communities. Over your 25 year mortgage, you will be saving over \$30 000 just by living in this amenity-focused community!
- The Elena is a beautiful, open concept home perfect for entertaining, and situated on a corner lot. Additional windows in the great room, stairwell and primary suite flood the home with natural light and greenspace views.
- The home has a spacious designer kitchen with ceiling height cabinets, upgraded quartz countertops and a massive island complete with eating bar. Fall in love with the bold navy cabinets, light grey backsplash and bright white quartz.
- Built in fireplace, modern stair railing and splatter texture ceilings compliment the kitchen selections for a chic, stylish home.
- Upstairs boasts a spacious central bonus room, two large secondary bedrooms, second floor laundry, and a spa-like primary retreat.
- You'll love the primary suite's huge walk in closet and private ensuite featuring dual sinks undermounted in quartz countertops, a full sized stand up shower with tiled walls and private water closet.
- The basement is ready for your unique design ideas with a separate side entry and 9' basement foundation. Rental suite, extra bedrooms, or a spacious rec room - the possibilities are endless.
- The 24' long garage with an 8' overhead door is the perfect place to park your truck or work on projects.
- As if this wasn't enough, this home also includes 6 appliances, and our Brilliant Smart Home System

BUILT TO LAST \ \ **BEDROCKHOMES.CA**

SPEC 2022 - Bedrock Homes Ltd. reserves the right to modify floorplans, renderings, elevations and features in a continuing effort to improve product quality. Floorplans, specifications & prices are subject to change without notice. Errors & omissions exempt.

ELENA B

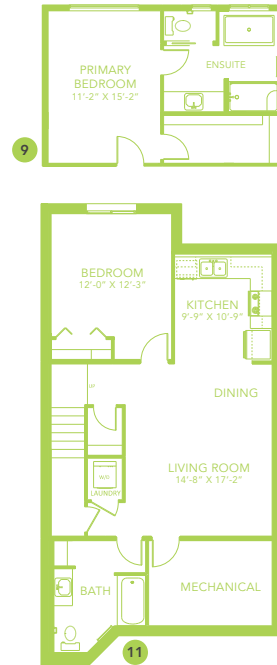
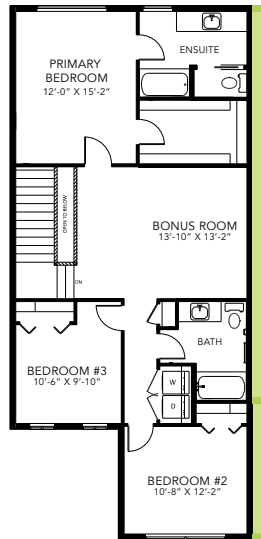
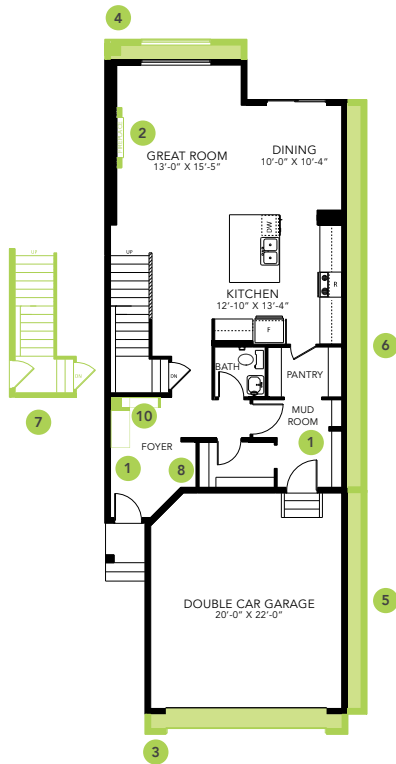
2088 SQ FT
65 Memorial Parkway



LIBERTY LANDING SHOWHOME

2 Legacy Road, Red Deer
403.814.1005
libertylanding@bedrockhomes.ca

Job # LBY-0-034726
Lot 13, Block 10, Plan 202-003



ELENA B