

# RUBY B

1928 SQ FT  
75 Memorial Parkway



## LIBERTY LANDING SHOWHOME

2 Legacy Road, Red Deer  
587-272-0933  
libertylanding@bedrockhomes.ca

Job # LBY-0-034721  
Lot 8, Block 10, Plan 202-0003

## DETAILS

- This home is located in the beautiful and newly developing suburb Liberty Landing. The community has a marvellous green space, walking paths, and a park all just steps out the front door.
- Shopping centres, grocery stores, farmers markets and more all within a quick drive. Schools can be reached via car ride or school bus. The school bus route runs throughout the neighbourhood.
- Open concept main floor.
- Massive island central to the kitchen with two edges as an eating bar, allowing the opposite side to have drawers for plenty of storage. While being exceptionally functional there is glorios countertop space, perfect for the family that loves to host.
- Stunning kitchen interior with lush pale grey cabinets, stunning grey quartz, and bright white textured backsplash. Creating the perfect aesthetic for the head in the clouds dreamer.
- Beautiful, durable quartz countertops carried throughout the home keep everything flowing and looking fresh.
- Set the atmosphere for the great room by turning on the colour changing electric fire place.
- Main floor half bath near front entrance accomodating to you.
- Deep cool brown luxury vinyl flooring ties the whole mail floor together.
- Included six piece Samsung stainless steel appliances keeps the kitchen chique looking.
- Large master suite facing the rear. Functional ensuite with walk through closet and upstairs laundry with closet and hallway entry ways.
- Enjoy the en suite with double undermounted sinks with quartz countertops, stand alone shower, and private water closet.
- Relax on the second floor in the front facing bonus area.
- Secondary bedrooms are facing the front. Allowing more privacy between them and the master suite.
- Ultra soft taupe carpet lines the second floor for great comfort
- Front attached two car garage with 8 foot overhead door.
- Included Brilliant Smart Home package. Control lights, front door lock, garage door and thermostat all on the panel or a convenient phone app.

RUBY B

# RUBY B

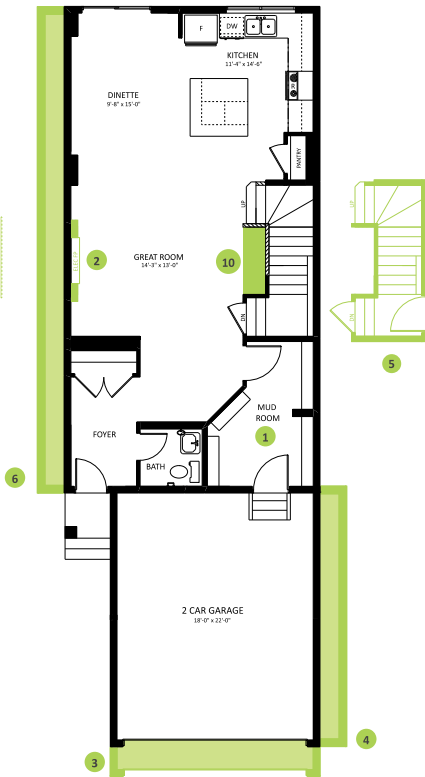
1928 SQ FT  
75 Memorial Parkway



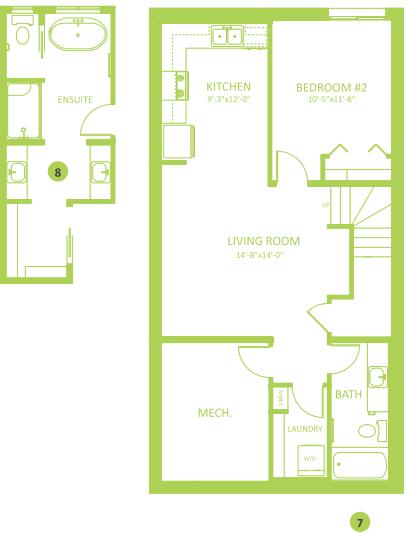
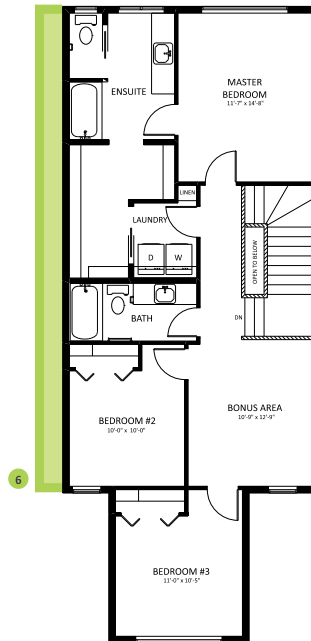
## LIBERTY LANDING SHOWHOME

2 Legacy Road, Red Deer  
587-272-0933  
libertylanding@bedrockhomes.ca

Job # LBY-0-034721  
Lot 8, Block 10, Plan 202-0003



**Main Floor**  
924 SQ FT



**Second Floor**  
1004 SQ FT

RUBY B