

RUBY K

1928 SQ FT
93 Memorial Parkway



LIBERTY LANDING SHOWHOME

2 Legacy Road, Red Deer
403.814.1005

libertylanding@bedrockhomes.ca

Job # LBY-0-034715
Lot 2, Block 10, Plan 202-0003

DETAILS

- This home is located in the beautiful and newly developing suburb Liberty Landing. The community has a marvellous green space, walking paths, and a park all just steps out the front door.
- Shopping centres, grocery stores, farmers markets and more all within a quick drive. Schools can be reached via car ride or school bus. The school bus route runs throughout the neighbourhood.
- Open concept main floor.
- Massive central island in the kitchen with two edges as an eating bar, allowing the opposite side to have drawers for plenty of storage. While providing exceptionally functional storage space, this also adds an abundance of counter space, perfect for the family that loves to host.
- Stunning kitchen interior with bright white cabinets, sleek grey quartz counter tops, and bold black backsplash. Creating the perfect aesthetic for the modern trendsetter.
- Beautiful, durable quartz countertops carried throughout the home keeps everything flowing and looking fresh.
- Set the atmosphere for the great room by turning on the colour changing electric fire place.
- Main floor half bath conveniently located near the front entrance for guests.
- Deep cool brown luxury vinyl flooring ties the whole main floor together.
- Included six piece Samsung stainless steel appliances keeps the kitchen chic looking.
- Large rear facing master suite with functional ensuite that leads to the huge walk in closet. The master walk in closet then connects through to the laundry room, which is also accessible from the hall.
- Enjoy the ensuite with its double sinks, quartz countertops, stand-alone shower and private water closet.
- Relax on the second floor in the front facing bonus area.
- Secondary bedrooms are facing the front. Allowing more privacy between them and the master suite.
- Ultra soft pale grey carpet lines the second floor for great comfort.
- Front attached two car garage with 8 foot overhead door.
- Included Brilliant Smart Home package. Control lights, front door lock, garage door and thermostat all on the panel or a convenient phone app.

RUBY K

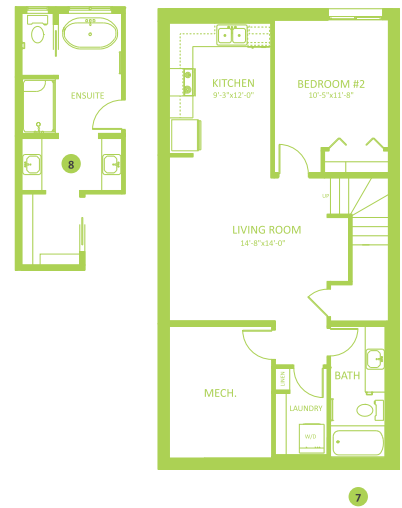
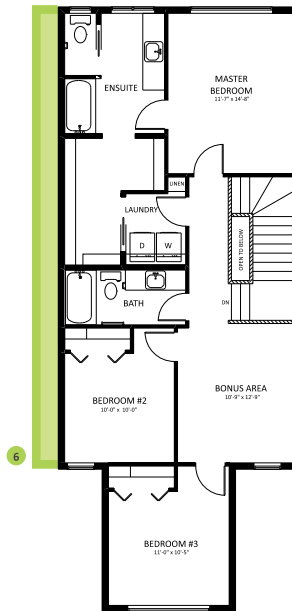
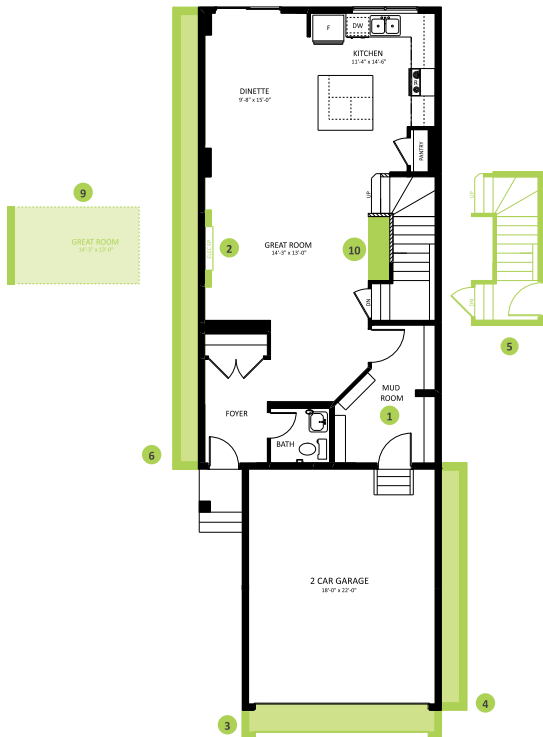
1928 SQ FT
93 Memorial Parkway



LIBERTY LANDING SHOWHOME

2 Legacy Road, Red Deer
403.814.1005
libertylanding@bedrockhomes.ca

Job # LBY-0-034715
Lot 2, Block 10, Plan 202-0003



RUBY K