



## LIBERTY LANDING SHOWHOME

43 Memorial Parkway, Edmonton  
587-272-0933  
libertylanding@bedrockhomes.ca

Job # LBY-0-034714  
Lot 1, Block 10, Plan 202-0003

## DETAILS

- This home is located in the beautiful and newly developing suburb Liberty Landing. The community has a marvellous green space, walking paths, and a park all just steps out the front door.
- Shopping centres, grocery stores, farmers markets and more all within a quick drive. Schools can be reached via car ride or school bus. The school bus route runs throughout the neighbourhood.
- Large central island with eating bar, leaves you with generous counterpace, functional for everyday use and great for a family who loves to host.
- Stunning kitchen interior with deep, sleek navy cabinets, bright white quartz, and soft grey textured backsplash. Creating the perfect aesthetic for the everyday adventurer.
- Spacious walk through pantry for easy storage and organizational needs.
- Convenient mudroom with entry from garage, foyer, and walk through pantry.
- Beautiful, durable quartz countertops carried throughout the home keep everything flowing and looking fresh.
- Set the atmosphere for the great room by turning on the colour changing electric fire place.
- Main floor half bath near front entrance accommodating for you.
- Lush soft brown luxury vinyl flooring ties the whole main floor together.
- Included six piece Samsung stainless steel appliances keeps the kitchen chic looking.
- Lovely rear facing master suite . Large walk in closet with plenty of space. Enjoy the double sinks with quartz countertops, the stand alone shower and private water closet.
- Contemporary railing, leading to the second floor, where you can relax in the central bonus area.
- Secondary bedrooms are facing the front. Both bedrooms have spacious closets and large windows.
- Conveniently equipped with second floor laundry.
- Ultra soft neutral grey carpet lines the second floor for great comfort
- Front attached two car garage with 8 foot overhead door.
- Included Brilliant Smart Home package. Control lights, front door lock, garage door and thermostat all on the panel or a convenient phone app.

# ELENA B

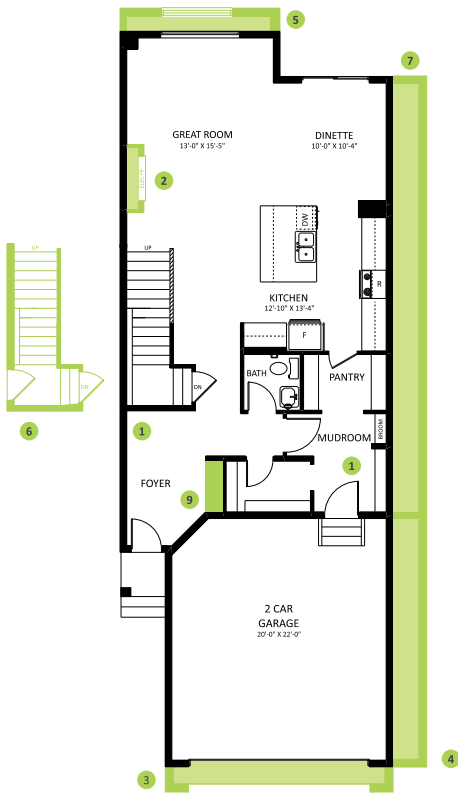
2088 SQ FT  
97 Memorial Parkway



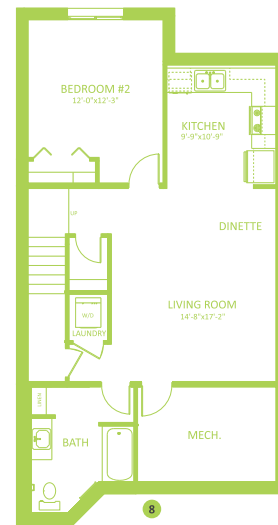
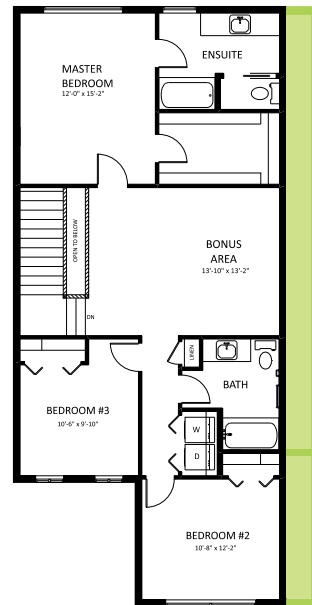
## LIBERTY LANDING SHOWHOME

43 Memorial Parkway, Edmonton  
587-272-0933  
libertylanding@bedrockhomes.ca

Job # LBY-0-034714  
Lot 1, Block 10, Plan 202-0003



**Main Floor**  
1011 SQ FT



**Second Floor**  
1077 SQ FT

ELENA B