



LIBERTY LANDING SHOWHOME

43 Memorial Parkway, Red Deer

587.457.8624

libertylanding@bedrockhomes.ca

Job # LBY-0-034658
Lot 60, Block 6, Plan 202-0003

Over
\$15,000
in Designer
Upgrades

DETAILS

- Spacious 3 bedroom, 2.5 bathroom home
- 14' x 22' front attached garage with 8' overhead door
- Upgraded exterior including added cultured stone, hardie panel and premium colored siding
- Added exterior soffit plug
- Open concept main floor with upgraded splatter texture ceilings
- Cozy linear electric fireplace in main floor great room
- Lots of natural lighting with large triple pane windows throughout and bright patio doors off the dinette
- Beautiful painted poplar railing
- U-shaped kitchen for with lots of counter space and added storage in the corner pantry
- Designer kitchen with quartz countertops and subway pattern backsplash
- Durable luxury vinyl plank flooring
- Included Samsung appliances: fridge, range, microwave, dishwasher, washing machine and dryer
- Convenient second floor laundry room
- Sizable rear facing master bedroom with walk-in closet and private 3 piece ensuite bathroom
- Media cable conduits for TV in great room and master suite
- App controlled Ecobee thermostat
- USB charging ports throughout
- Heat recover ventilator, high efficiency furnace, and high efficiency hot water tank help to keep utility bills low
- Ask us about our superior sound dampening techniques between duplexes!



BEDROCK
HOMES

SOFIA ASHBURY

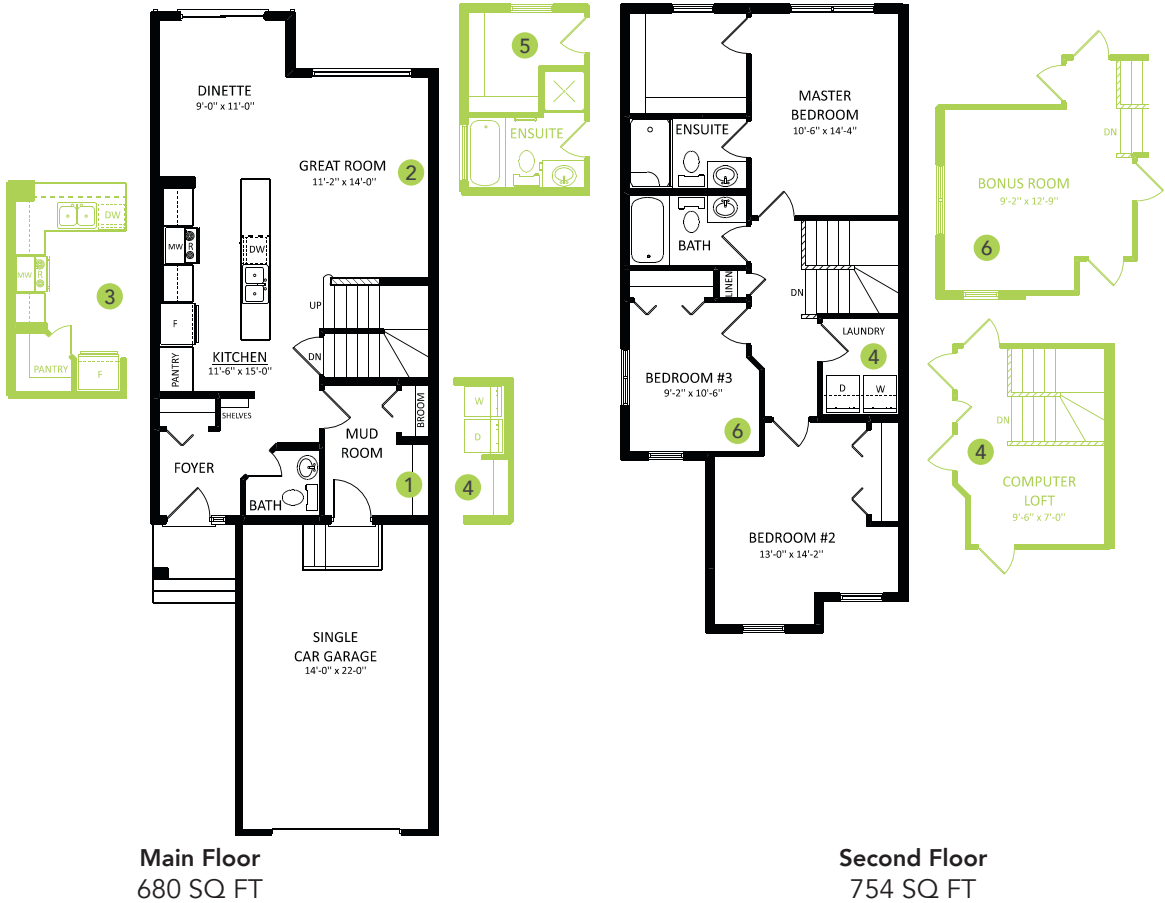
1434 SQ FT
9 Linden Place



LIBERTY LANDING SHOWHOME

43 Memorial Parkway, Red Deer
587.457.8624
libertylanding@bedrockhomes.ca

Job # LBY-0-034658
Lot 60, Block 6, Plan 202-0003



SOFIA ASHBURY