



BEDROCK
HOMES

COPPER PHOENIX II

1730 SQ FT
13 Linden Place



LIBERTY LANDING SHOWHOME

43 Memorial Parkway, Red Deer
587.272.0933
libertylanding@bedrockhomes.ca

Job # LBY-0-034656
Lot 58, Block 6, Plan 202-0003

DETAILS

- This 3 bedroom, 2.5 bathroom home is the perfect combination of spacious and economical.
- This curb appeal of this home is undeniable, with cottage style roofing, and premium hardie panel.
- This home greets you with a practical front foyer, complete with large coat closet and bench area. The garage entrance opens into a sizable mudroom for all your winter clothing storage.
- Large windows flood the open concept living area with natural lighting. The upgraded 9', splatter texture ceilings on the main floor make it hard to believe you are in a duplex.
- The list of features in this gorgeous kitchen are endless! Including a large corner pantry, oversized island with eating bar, upgraded subway tile backsplash, quartz countertops, under mounted sinks, soft close drawers, durable vinyl plank flooring and a 5 piece Samsung appliance package.
- Retire to the main floor great room after dinner, to socialize with friends and family around the cozy linear electric fireplace.
- The staircase is accented by a paint grade poplar railing, which adds to the open feel of the main floor living area.
- As you move upstairs, you are greeted by a versatile, centrally located second floor bonus room that can be used for anything, from an open office space, to a game room for the family.
- The convenient second floor laundry ensures you will never again have to carry heavy hampers of clothing up and down the stairs.
- The luxurious master suite features a private full sized ensuite bathroom, and still has room for a huge walk in closet.
- Bedrock Homes cares about the little things that make day to day life easier for our homeowners. USB charging ports, media cable conduits, and USB charging ports are all included in this home.
- Our homes come standard with state of the art technology such as a smart thermostat with Wi-Fi capability and app control, as well as a high efficiency furnace and hot water tank. Our homes also feature a Heat Recovery Ventilator to constantly keep fresh air circulating throughout your home.
- Patio doors off the dining area open to the back yard. Add a gate to your back fence, and you can exit directly from the yard to Liberty Landing's plentiful walking trails.
- An attached double car garage with 8' overhead door is the perfect size for keeping your vehicle sheltered from the elements, while also storing tools, tires, lawn care equipment, and anything else you can think of!

COPPER PHOENIX

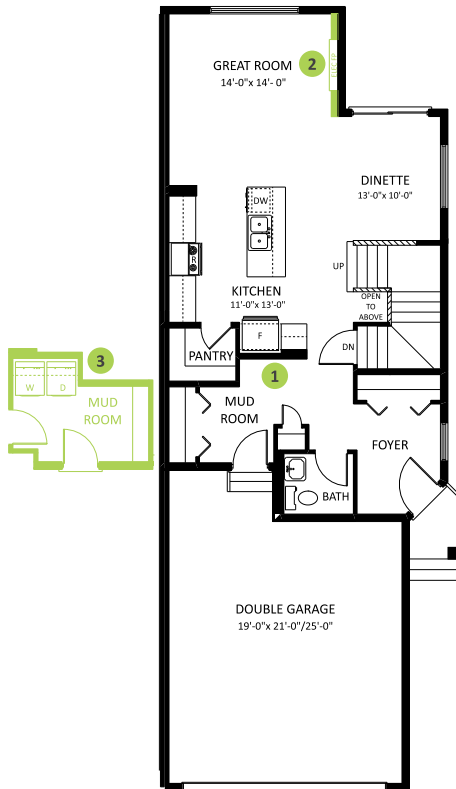
1730 SQ FT
13 Linden Place



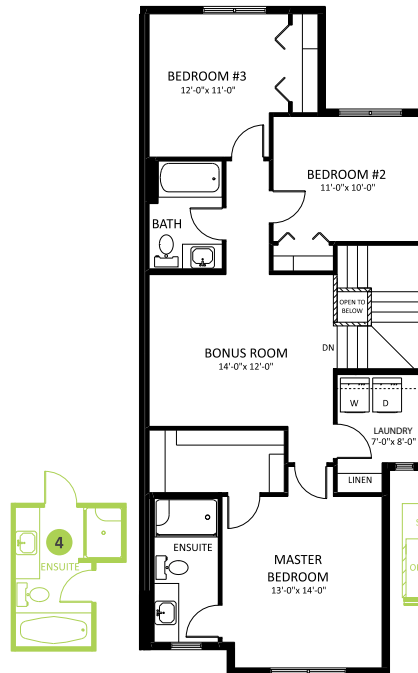
LIBERTY LANDING SHOWHOME

43 Memorial Parkway, Red Deer
587.272.0933
libertylanding@bedrockhomes.ca

Job # LBY-0-034656
Lot 58, Block 6, Plan 202-0003



Main Floor
776 SQ FT



Second Floor
954 SQ FT

