

1730 SQ FT
19 Linden Place



LIBERTY LANDING SHOWHOME

43 Memorial Parkway, Red Deer
587.272.0933
libertylanding@bedrockhomes.ca

Job # LBY-0-034653
Lot 55, Block 6, Plan 202-0003

DETAILS

- This home is one step larger than the smaller Ashbury layout. With 3 bedrooms, 2.5 bathrooms and an upstairs bonus room, this home comes in at an impressive 1730 sqft.
- Sagiper detailing and traditional gable roofing gives this home a classic curb appeal that will stand the test of time.
- The main floor of this home features a practical mudroom, gorgeous designer kitchen and large great room area complete with a cozy linear electric fireplace.
- The kitchen features a large corner pantry, over sized island with eating bar, quartz countertops, ceiling height cabinets, soft close drawers and durable vinyl plank flooring.
- The dining area is directly off the kitchen, for easy table setting and clean up. The patio doors off the dining area let in lots of natural lighting, and make it easy to step outside and fire up the BBQ.
- Our homes come standard with state of the art technology such as a smart thermostat with Wi-Fi capability and app control, as well as a high efficiency furnace and hot water tank. Our homes also feature a Heat Recovery Ventilator to constantly keep fresh air circulating throughout your home.
- USB charging ports are included in the kitchen for easily charging all of your devices, and media cable conduit in the great room, lets you wall mount your TV without messy cables hanging down.
- The upgraded paint grade poplar railing and pendant lights over the island contribute to the polished look of the main floor.
- As you move upstairs, you are greeted by a versatile, centrally located second floor bonus room that can be used for anything, from an open office space, to a game room for the family.
- The master bedroom is complete with a full ensuite bathroom that includes the same quality finishes as the rest of the home. Add to that a large walk in closet, and you have the perfect master retreat.
- The laundry room is conveniently located on the second floor.
- The front facing double attached garage is a must have in Alberta, so that you never have to worry about scraping snow off your vehicle again.

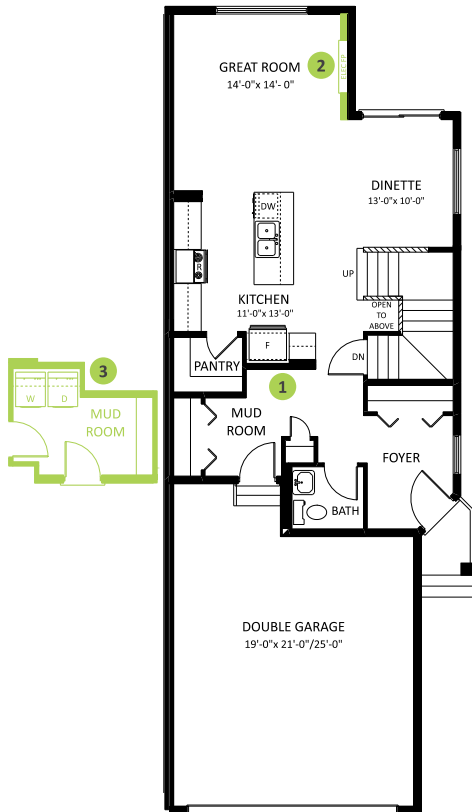
1730 SQ FT
19 Linden Place



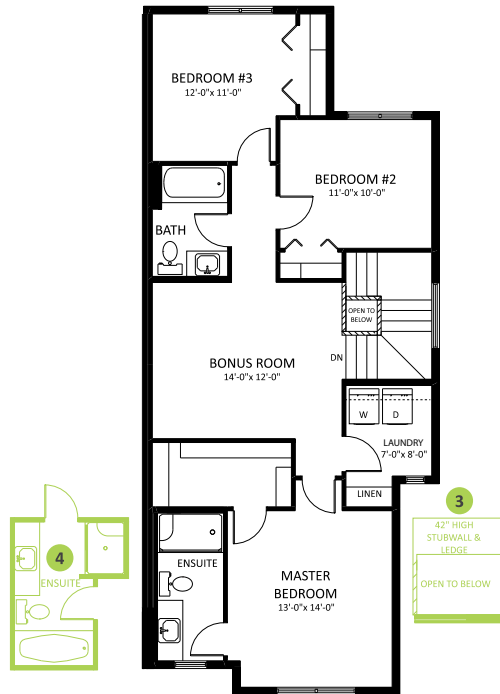
LIBERTY LANDING SHOWHOME

43 Memorial Parkway, Red Deer
587.272.0933
libertylanding@bedrockhomes.ca

Job # LBY-0-034653
Lot 55, Block 6, Plan 202-0003



Main Floor
776 SQ FT



Second Floor
954 SQ FT

