

LOGAN PHOENIX II

1730 SQ FT
21 Linden Place



LIBERTY LANDING SHOWHOME

43 Memorial Parkway, Red Deer
587.272.0933
libertylanding@bedrockhomes.ca

Job # LBY-0-034652
Lot 54, Block 6, Plan 202-0003

DETAILS

- The Logan is one of our most elegant duplex elevations, with added sagiper detailing, board and batten and cultured stone, this home is sure to catch your eye.
- This 3 bedroom, 2.5 bathroom home features a versatile second floor bonus room, as well as an open concept main floor with large great room.
- Splatter texture 9' ceilings and huge windows flood the main floor with natural lighting, and add to the bright, airy feel of home.
- Our clients asked, and we listened! Some of the most common requests that we have heard from new home buyers were for upstairs laundry, a corner pantry, and an upstairs bonus room at the economical cost of our duplexes, and this home has it all!
- Our designer kitchens are loaded with features such as durable vinyl plank flooring, beautiful quartz countertops, under mounted sinks, ceiling height cabinets, soft close drawers, USB charging ports, full samsung appliance package, corner pantry, and a large island that adds lots of useful counter space to the area.
- The spacious main floor great room is the perfect frame for the picturesque linear electric fireplace that will keep you cozy and warm all winter long.
- The dining area is perfect for entertaining, and the large patio doors flood the space with natural lighting
- The paint grade poplar railing that frames the staircase and pendant lights over the island contribute to the polished look of this home.
- As you move upstairs, you are greeted by a versatile, centrally located second floor bonus room that can be used for anything, from an open office space, to a game room for the family.
- The master retreat is the perfect place to retire after a long day. The full ensuite bathroom boasts the same high quality interior finishes as the rest of the home.
- Laundry is located on the second floor for your convenience.
- A large double attached garage leaves lots of space for storage after parking your vehicles inside, away from the elements.
- This home also backs onto Liberty Landing's expansive network of walking trails.

LOGAN PHOENIX II

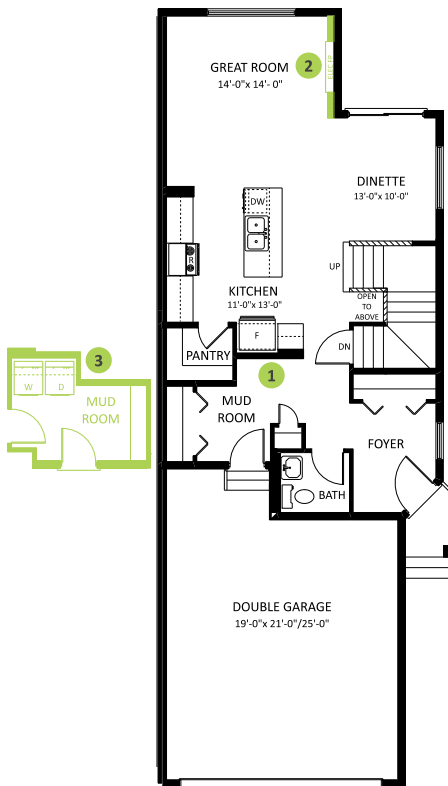
1730 SQ FT
21 Linden Place



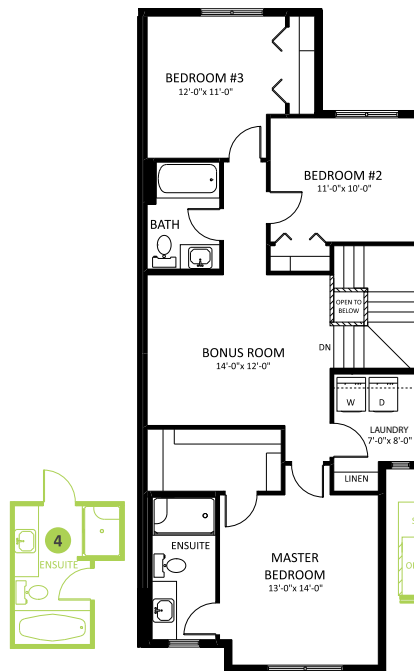
LIBERTY LANDING SHOWHOME

43 Memorial Parkway, Red Deer
587.272.0933
libertylanding@bedrockhomes.ca

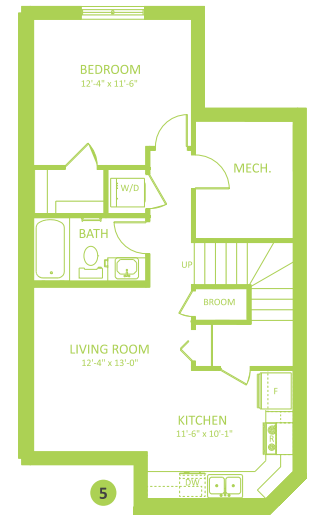
Job # LBY-0-034652
Lot 54, Block 6, Plan 202-0003



Main Floor
776 SQ FT



Second Floor
954 SQ FT



LOGAN PHOENIX II