



LIBERTY LANDING SHOWHOME

43 Memorial Parkway, Red Deer

587.457.8624

libertylanding@bedrockhomes.ca

Job # LBY-0-034649

Lot 24, Block 96, Plan 172-3061

Over
\$20,000
in Designer
Upgrades

DETAILS

- Over \$20, 000 in additional upgrades!
- Spacious 3 bedroom, 2.5 bathroom home
- Attached tandem three car garage with upgraded overhead door
- Garage floor drain with sump pail
- 13' x 10' pressure treated wood deck overlooks green space
- Open concept main floor with upgraded splatter texture ceilings
- Included Hunter Douglas Blinds throughout home
- Beautiful designer kitchen with central island and eating bar
- Upgraded two tone ceiling high kitchen cabinets with subway pattern tile backsplash
- Large walk-in pantry with frosted glass door
- Included Samsung appliances: fridge, range, microwave, dishwasher, washing machine and dryer
- Cozy linear electric fireplace
- Stylish painted poplar railing on main and second floor
- Durable luxury vinyl plank flooring throughout main floor
- Huge, functional front facing bonus room above garage
- Comfortable master retreat with walk-in closet and beautiful green space view
- Private ensuite bathroom off the master bedroom, with his and hers sinks
- Convenient second floor laundry room
- Media cable conduits for wall mount TV in great room, bonus room, and master suite
- USB charging ports throughout
- Heat recover ventilator, high efficiency furnace and high efficiency 50 gallon hot water tank
- Ask us how you can add our Brilliant Smart Home package to your new home!



BEDROCK
HOMES

SEVILLE B

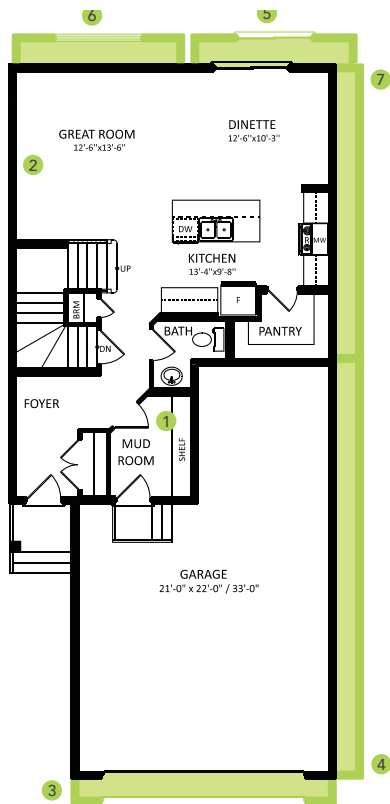
1990 SQ FT
37 Memorial Parkway



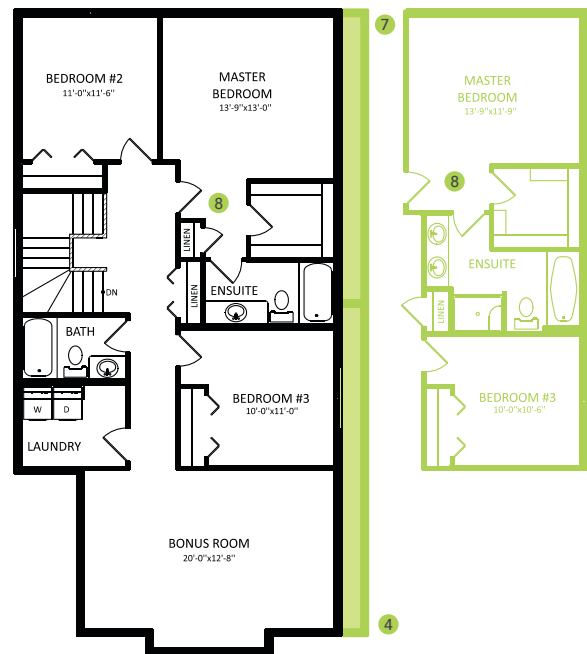
LIBERTY LANDING SHOWHOME

43 Memorial Parkway, Red Deer
587.457.8624
libertylanding@bedrockhomes.ca

Job # LBY-0-034649
Lot 24, Block 9, Plan 172-3061



Main Floor
789 SQ FT



Second Floor
1194 SQ FT