



LIBERTY LANDING SHOWHOME

43 Memorial Parkway, Red Deer
587.457.8624
libertylanding@bedrockhomes.ca

Job # LBY-0-033846
Lot 101, Block 6, Plan 172 3061

Over
\$10,000
in Designer
Upgrades

DETAILS

- Over \$10 000 in additional upgrades!
- 3 bedrooms, 2.5 bathrooms with a bright, open concept main floor
- 14' x 23' front facing, attached garage with 8' overhead door
- Paved rear lane access
- Premium siding, upgraded Sagiper detailing and cultured stone on exterior elevation
- Designer kitchen with a massive island, complete with eating bar
- Quartz countertops and undermount sinks throughout the home
- Included six piece Samsung appliance package
- Subway pattern tile backsplash in kitchen
- Ceiling height kitchen cabinets and large pantry
- Stubwalls upgraded to beautiful paint grade railing on main floor
- Cozy linear electric fireplace
- Durable luxury vinyl plank flooring throughout main floor
- Spacious master bedroom with private ensuite and walk-in closet
- Convenient linen closet in main bathroom
- Shower tile to ceiling in main bathroom and ensuite
- Media cable conduits and USB charging ports
- Large mudroom off garage entrance for added storage
- App controlled Smart Thermostat
- Triple pane windows, low E argon filled Energy Star rated windows throughout
- Heat recover ventilator, high efficiency furnace and high efficiency hot water tank help to keep utility bills low



BEDROCK
HOMES

WAYDE BIRK

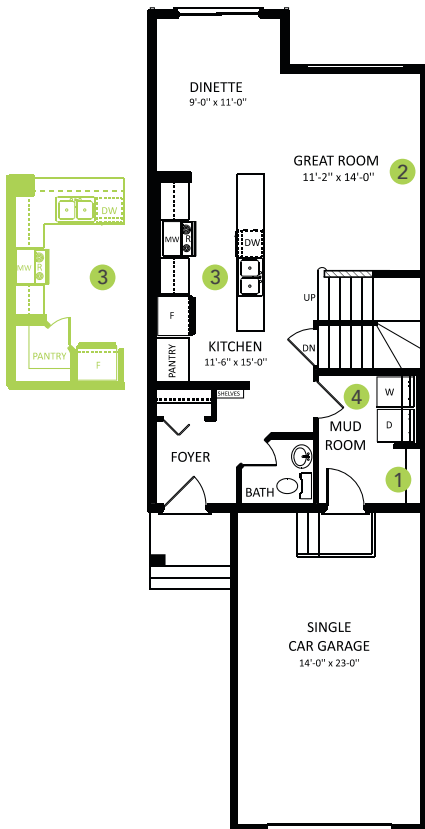
1360 SQ FT
72 Latoria Court



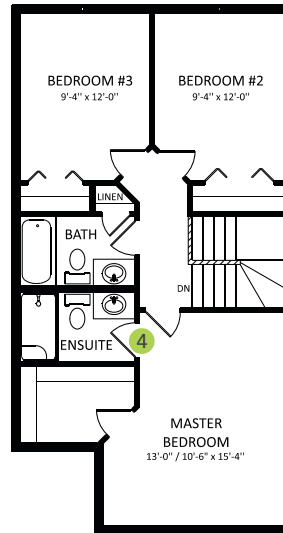
LIBERTY LANDING SHOWHOME

43 Memorial Parkway, Red Deer
587.457.8624
libertylanding@bedrockhomes.ca

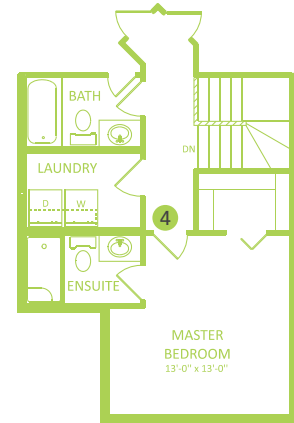
Job # LBY-0-033846
Lot 101, Block 6, Plan 172 3061



Main Floor
680 SQ FT



Second Floor
680 SQ FT



WAYDE BIRK