



BEDROCK
HOMES

STELLA K

1833 SQ FT
3513 Kulay Link Edmonton, AB



ONE AT KESWICK SHOWHOME

3411 Kulay Green SW, Edmonton
587-521-6580
oneatkeswick@bedrockhomes.ca

Job # KWK 5380
Lot 6, Block 23, Plan 222-1722

DETAILS

- Walking distance to Joey Moss K-9 School and Close access to Joan Carr K-9 Catholic School.
- Every Bedrock Home comes complete with a smart home technology system that includes: Smart thermostat, video doorbell & Wi-Fi Smart keyless lock with touch screen and a Smart Home Hub. (Built in Brilliant optional)
- Separate side entrance and 9'4" foundation height perfect for future rental suite.
- All Bedrock homes include a complete appliance package delivered and installed: Stainless Steel kitchen appliances including a 28 cu. Ft. french door fridge with bottom pull out freezer and ice machine, a 5 burner range, an OTR microwave and a built-in dishwasher. The Laundry is high efficiency front load washer and dryer in white.
- Paint grade railing with straight metal spindles between main and second floor
- Main floor flex room option added for work from home requirements.
- Quartz counters and undermount sinks in the kitchen and all bathrooms with vanities are included in every bedrock home.
- 4 piece ensuite with dual sinks and a 5' tiled shower complete with a 10 mil glass barn door.
- Soft close kitchen cabinet doors and drawers.
- Splatter Texture Ceilings included vs "popcorn ceilings"
- 2nd floor laundry and linen closet for ease and convenience
- 50" Linear Ortech LED electric fireplace complete with electrical and conduit above to mount you TV above
- Energy efficient features include triple pane, Low-E, argon gas filled, Energy Star rated windows, heat recovery ventilator, 96.5% efficient and direct vented furnace, 80gal hot water tank and Bedrock's "Hotbox" system.
- Triple pane, low-e argon filled Energy Star rated windows

BUILT TO LAST \\ **BEDROCKHOMES.CA**

SPEC 2023 - Bedrock Homes Ltd. reserves the right to modify floorplans, renderings, elevations and features in a continuing effort to improve product quality. Floorplans, specifications & prices are subject to change without notice. Errors & omissions exempt.

STELLA K

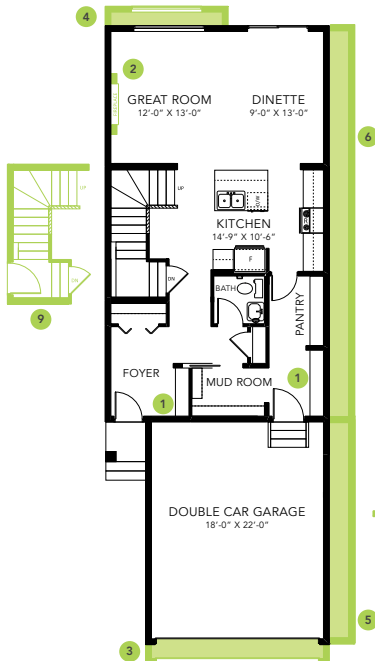
1833 SQ FT
3513 Kulay Link Edmonton, AB



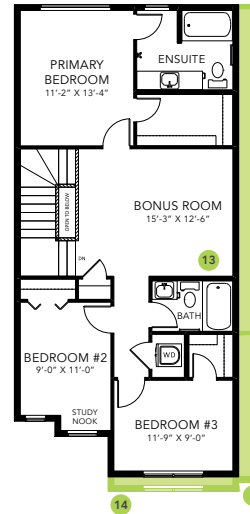
ONE AT KESWICK SHOWHOME

3411 Kulay Green SW, Edmonton
587-521-6580
oneatkeswick@bedrockhomes.ca

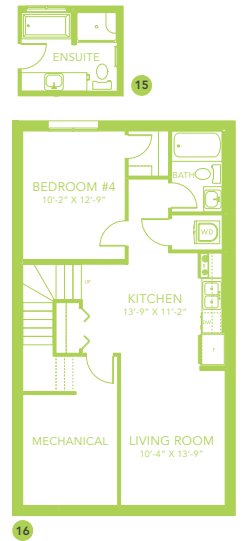
Job # KWK 5380
Lot 6, Block 23, Plan 222-1722



Main Floor
858 SQ FT



Second Floor
912 SQ FT



STELLA K