



BEDROCK
HOMES

DAYA K

1501 SQ FT
3510 Kulay Link SW Edmonton, AB



ONE AT KESWICK SHOWHOME

3411 Kulay Green SW, Edmonton
587-521-6580
oneatkeswick@bedrockhomes.ca

Job # KWK 5376
Lot 29, Block 22, Plan 222-1722

DETAILS

- Walking distance to Joey Moss K-9 School and Close access to Joan Carr K-9 Catholic School.
- Every Bedrock Home comes complete with a smart home technology system that includes: Smart thermostat, video doorbell & Wi-Fi Smart keyless lock with touch screen and a Smart Home Hub. (Built in Brilliant optional)
- The open concept kitchen features 41" upper cabinets to the ceiling, a large 6' island with eating bar and a huge 8' pantry for extra storage.
- Separate side entrance and 9'4" foundation height perfect for future rental suite.
- 20x20 rear garage pad with built up curbing for future garage and you can have us build the garage for you as part of your purchase.
- 50" Linear Ortech LED electric fireplace complete with electrical and conduit above to mount you TV above
- 2nd floor laundry and linen closet for ease and convenience
- Quartz counters and undermount sinks in the kitchen and all bathrooms with vanities are included in every bedrock home.
- Paint grade railing with straight metal spindles on the stairs leading to 2nd floor
- Energy efficient features include triple pane, Low-E, argon gas filled, Energy Star rated windows, heat recovery ventilator, 96.5% efficient and direct vented furnace, 80gal hot water tank and Bedrock's "Hotbox" system.
- Triple pane, low-e argon filled Energy Star rated windows
- Gem Cabinets: Emerge Monaco Linear Ash (Flat Slab)
- Splatter Texture Ceilings included vs "popcorn ceilings"
- White quartz counters throughout: Diavik 3/4" Thick
- Luxury Vinyl Plank flooring throughout the main floor and all "wet" areas: Dream Roads Series Groat
- Stain Proof Carpeting by Mohawk - Portico Collection: True Harmony - Silverado

DAYA K

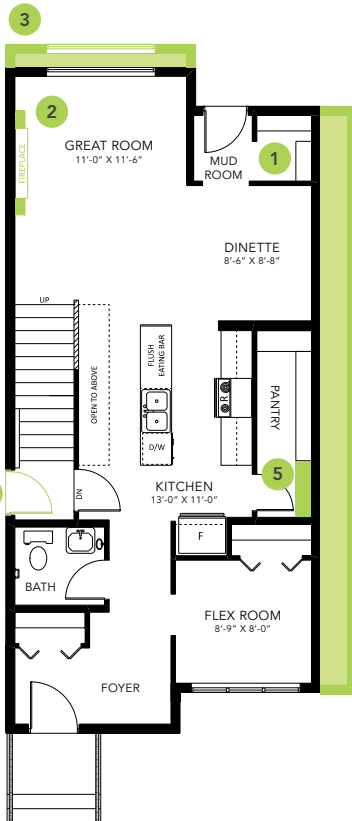
1501 SQ FT
3510 Kulay Link SW Edmonton, AB



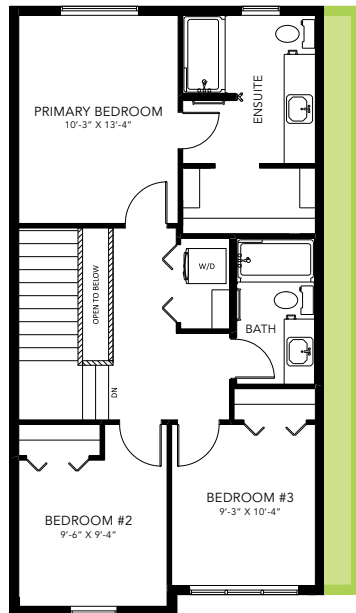
ONE AT KESWICK SHOWHOME

3411 Kulay Green SW, Edmonton
587-521-6580
oneatkeswick@bedrockhomes.ca

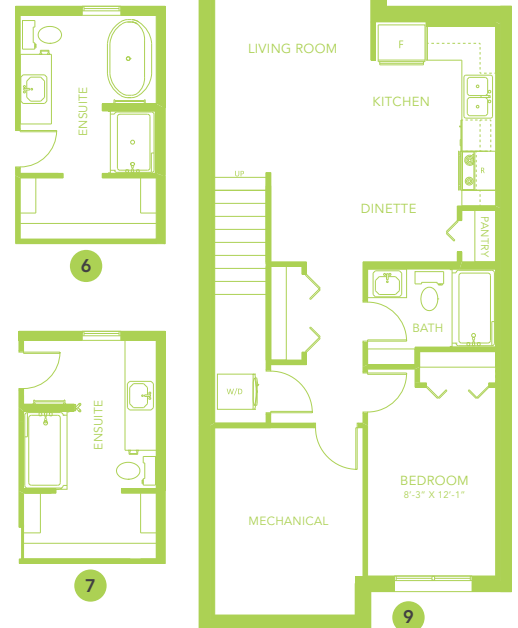
Job # KWK 5376
Lot 29, Block 22, Plan 222-1722



Main Floor
808 SQ FT



Second Floor
639 SQ FT



DAYA K