



BEDROCK
HOMES

SASHA K

1564 SQ FT
3512 Kulay Link SW Edmonton, AB



ONE AT KESWICK SHOWHOME

3411 Kulay Green SW, Edmonton
587-521-6580
oneatkeswick@bedrockhomes.ca

Job # KWK 5375
Lot 28, Block 22, Plan222-1722

DETAILS

- Walking distance to Joey Moss K-9 School and Close access to Joan Carr K-9 Catholic School.
- Every Bedrock Home comes complete with a smart home technology system that includes: Smart thermostat, video doorbell & Wi-Fi Smart keyless lock with touch screen and a Smart Home Hub. (Built in Brilliant optional)
- Paint grade railing with straight metal spindles between main and second floor
- All Bedrock homes include a complete appliance package delivered and installed: Stainless Steel kitchen appliances including a 28 cu. Ft. french door fridge with bottom pull out freezer and ice machine, a 5 burner range, an OTR microwave and a built-in dishwasher. The Laundry is high efficiency front load washer and dryer in white.
- Master bath features a stand up shower, separate soaker tub and dual sinks in the vanity
- Splatter Texture Ceilings included vs "popcorn ceilings"
- 50" Linear Ortech LED electric fireplace complete with electrical and conduit above to mount you TV above
- 2nd floor bonus room with views to the main floor with an open railing staircase
- Quartz counters and undermount sinks in the kitchen and all bathrooms with vanities are included in every bedrock home.
- Energy efficient features include triple pane, Low-E, argon gas filled, Energy Star rated windows, heat recovery ventilator, 96.5% efficient and direct vented furnace, 80gal hot water tank and Bedrock's "Hotbox" system.
- 20x20 rear garage pad with built up curbing for future garage and you can have us build the garage for you as part of your purchase.
- Kitchen Craft cabinets: Soho Thermafoil Satin Starless including 41" uppers in the kitchen
- White Quartz counters throughout by Jade Stone: "Crystal Crescent"
- Luxury Vinyl Plank flooring throughout the main floor and all "wet" areas: Divine Quest "Miss Sunshine"
- Stain Proof Carpeting by Mohawk - Portico Collection: True Harmony - Silverado

BUILT TO LAST \\ **BEDROCKHOMES.CA**

SPEC 2023 - Bedrock Homes Ltd. reserves the right to modify floorplans, renderings, elevations and features in a continuing effort to improve product quality. Floorplans, specifications & prices are subject to change without notice. Errors & omissions exempt.

SASHA K

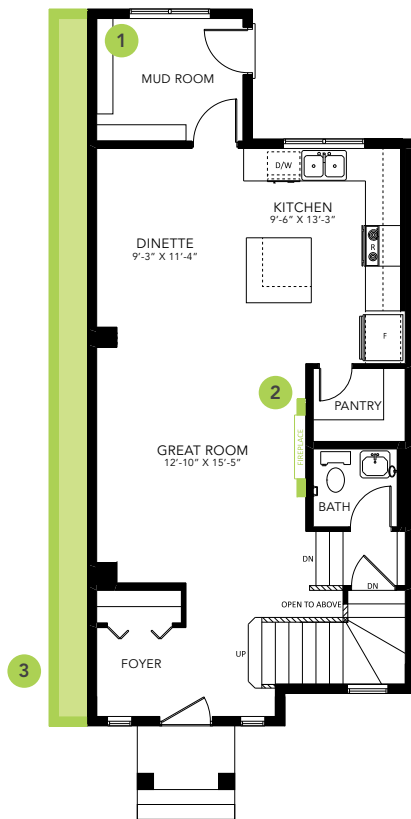
1564 SQ FT
3512 Kulay Link SW Edmonton, AB



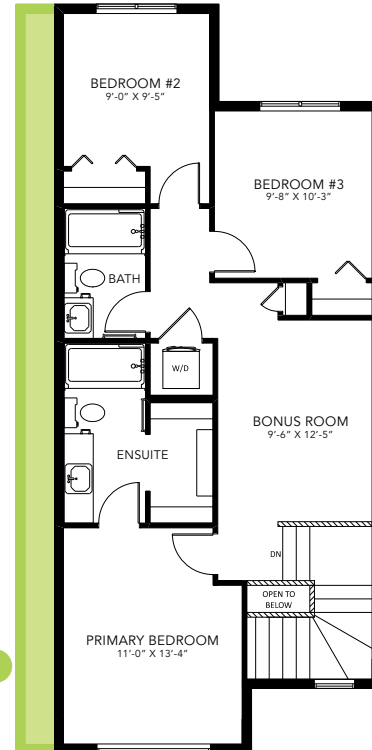
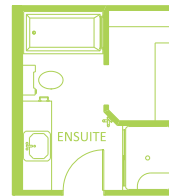
ONE AT KESWICK SHOWHOME

3411 Kulay Green SW, Edmonton
587-521-6580
oneatkeswick@bedrockhomes.ca

Job # KWK 5375
Lot 28, Block 22, Plan 222-1722



Main Floor
784 SQ FT



Second Floor
780 SQ FT

SASHA K