



BEDROCK
HOMES

ZOE P

1279 SQ FT
3516 Kulay Link SW



ONE AT KESWICK SHOWHOME

3411 Kulay Green SW, Edmonton
587-521-6580
oneatkeswick@bedrockhomes.ca

Job # KWK 5373
Lot 26, Block 22, Plan 222-1722

DETAILS

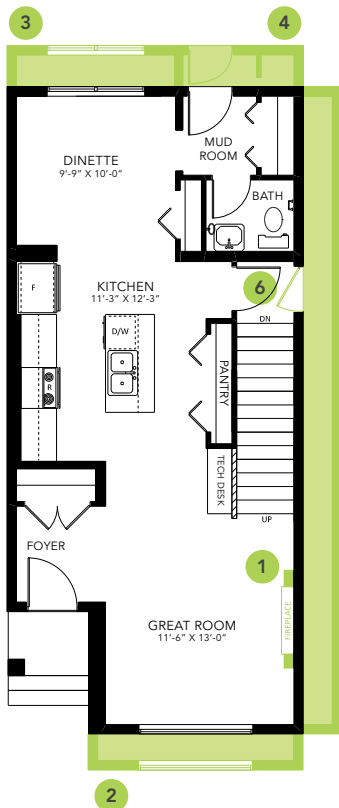
- Walking distance to Joey Moss K-9 School and Close access to Joan Carr K-9 Catholic School.
- Every Bedrock Home comes complete with a smart home technology system that includes: Smart thermostat, video doorbell & Wi-Fi Smart keyless lock with touch screen and a Smart Home Hub. (Built in Brilliant optional)
- Separate side entrance and 9'4" foundation height perfect for future rental suite.
- The open concept kitchen features 41" upper cabinets to the ceiling, a large 6' island with eating bar and a huge 8' pantry for extra storage.
- Quartz counters and undermount sinks in the kitchen and all bathrooms with vanities are included in every bedrock home.
- All Bedrock homes include a complete appliance package that includes: Stainless Steel kitchen appliances including a 28 cu. Ft. french door fridge with bottom pull out freezer and ice machine, a 5 burner range, an OTR microwave and a built-in dishwasher. The Laundry is high efficiency front load washer and dryer in white.
- East front and west facing backyard perfect for those afternoon BBQ gatherings in the yard.
- 20x20 rear garage pad with built up curbing for future garage and you can have us build the garage for you as part of your purchase.
- Energy efficient features include triple pane, Low-E, argon gas filled, Energy Star rated windows, heat recovery ventilator, 96.5% efficient and direct vented furnace, 80gal hot water tank and Bedrock's "Hotbox" system.
- Gem Cabinets: Emerge Monaco Linear Ash (Flat Slab)
- White quartz counters throughout: Diavik 3/4" Thick
- Luxury Vinyl Plank flooring throughout the main floor and all "wet" areas: Dream Roads Series Groat
- Stain Proof Carpeting by Mohawk - Portico Collection: True Harmony - Silverado



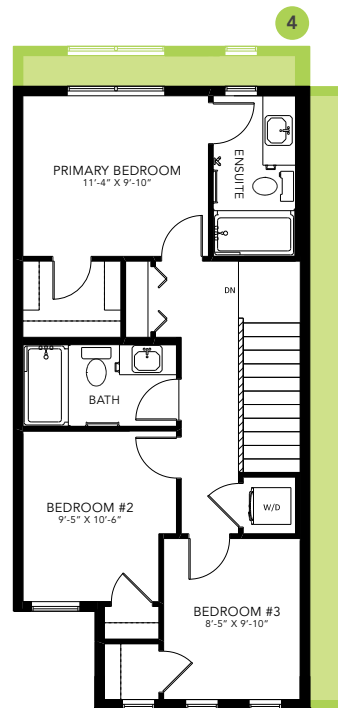
ONE AT KESWICK SHOWHOME

3411 Kulay Green SW, Edmonton
587-521-6580
oneatkeswick@bedrockhomes.ca

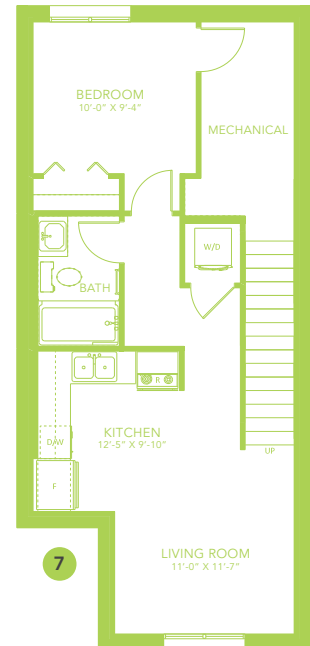
Job # KWK 5373
Lot 26, Block 22, Plan 222-1722



Main Floor
674 SQ FT



Second Floor
605 SQ FT



ZOE P