



BEDROCK
HOMES

JULIA P

1713 SQ FT
3333 Kulay Way SW



ONE AT KESWICK SHOWHOME

3411 Kulay Green SW, Edmonton
587-521-6580
oneatkeswick@bedrockhomes.ca

Job # KWK 0-035287
Lot 23, Block 21, Plan 022-0111

DETAILS

- 9 ft. ceilings on the main floor
- Spindle railing on main and second floor creating an open staircase top to bottom
- 4 pc. Ensuite with a 5' shower upgrade
- Bonus room upstairs
- Side Entrance for suite possibility
- Splatter texture ceiling (as opposed to popcorn texture)
- Trendy navy cabinets throughout (KitchenCraft Soho Starless), finished to the ceiling in the kitchen
- White quartz countertops in kitchen and upstairs bathrooms with undermount sinks (Crystal Crescent)
- Luxury vinyl plank flooring throughout main floor and wet areas (Divine Quest Miss Sunshine)
- Stain-proof carpeting upstairs (Mohawk True Harmony Silverado)
- 6 pc. Stainless Steel appliances with white high efficiency front load washer/dryer
- Triple pane, low-E argon filled Energy Star rated windows
- Heat recovery ventilator, high efficiency gas furnace and 80 gallon hot water tank
- Home includes smart home technology that features a video door bell, Wi-Fi entrance dead bolt, smart thermostat and smart home hub

JULIA P

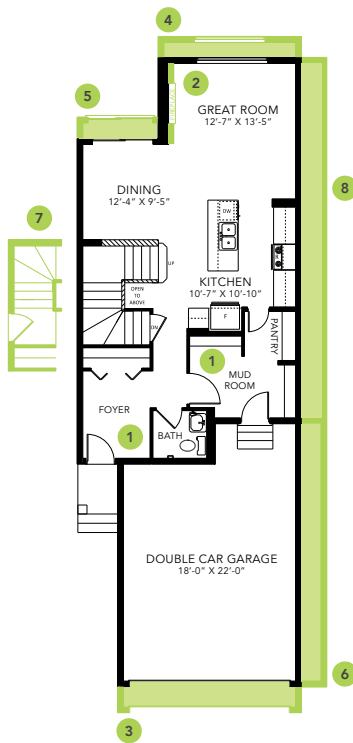
1713 SQ FT
3333 Kulay Way SW



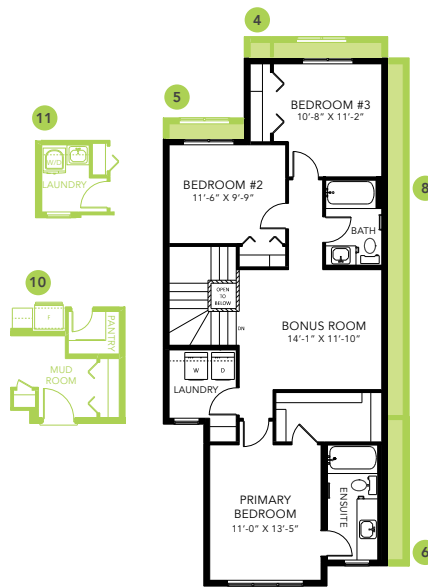
ONE AT KESWICK SHOWHOME

3411 Kulay Green SW, Edmonton
587-521-6580
oneatkeswick@bedrockhomes.ca

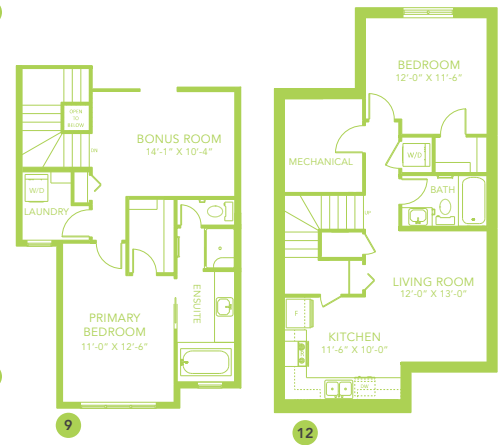
Job # KWK 0-035287
Lot 23, Block 21, Plan 022-0111



Main Floor
774 SQ FT



Second Floor
939 SQ FT



JULIA P