



BEDROCK
HOMES

JULIA P

1713 SQ FT
3263 Kulay Way SW



ONE AT KESWICK SHOWHOME

3411 Kulay Green SW, Edmonton
587-521-6580
oneatkeswick@bedrockhomes.ca

Job # KWK 0-035059
Lot 81, Block 10, Plan 212-2788

DETAILS

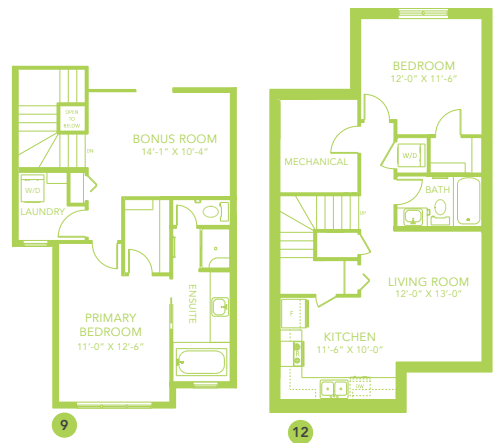
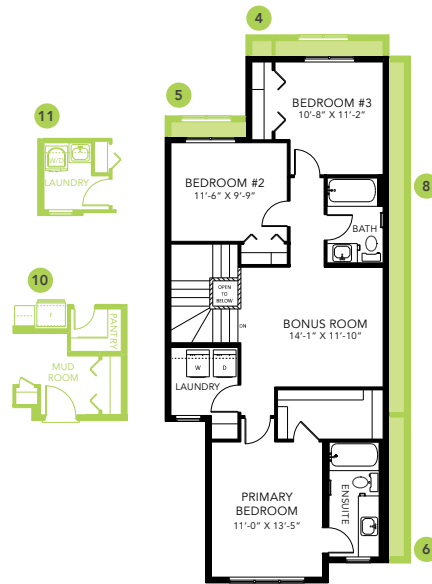
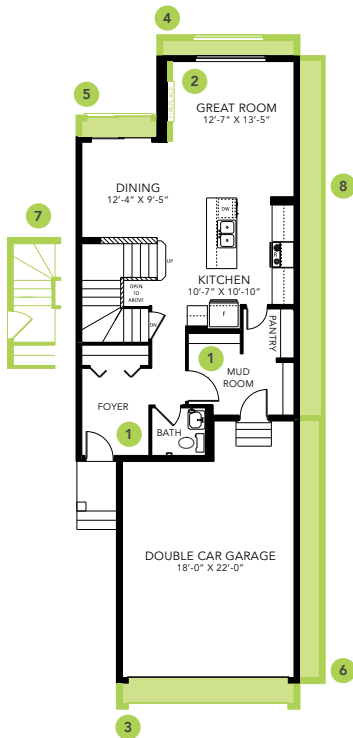
- 9 ft. ceilings on the main floor
- Spindle railing on main and second floor creating an open staircase top to bottom
- 4 pc. Ensuite with a stand-up shower
- Bonus room upstairs
- Side Entrance for suite possibility
- Splatter texture ceiling (as opposed to popcorn texture)
- Grey cabinets throughout (KitchenCraft Soho Thermofoil Satin Sleet), finished to the ceiling in the kitchen, with contrasting black pulls and soft close action
- Grey quartz countertops in kitchen and upstairs bathrooms with undermount sinks (Flint)
- Luxury vinyl plank flooring throughout main floor and wet areas (Divine Quest North Face)
- Stain-proof carpeting upstairs (True Harmony Eclipse)
- 6 pc. Stainless Steel appliances with white high efficiency front load washer/dryer
- Triple pane, low-E argon filled Energy Star rated windows
- Heat recovery ventilator, high efficiency gas furnace and 80 gallon electric hot water tank



ONE AT KESWICK SHOWHOME

3411 Kulay Green SW, Edmonton
587-521-6580
oneatkeswick@bedrockhomes.ca

Job # KWK 0-035059
Lot 81, Block 10, Plan 212-2788



JULIA P