



BEDROCK
HOMES

SASHA K

1564 SQ FT
3232 Kulay Way SW



ONE AT KESWICK SHOWHOME

3411 Kulay Green SW, Edmonton
587-521-6580
oneatkeswick@bedrockhomes.ca

Job # KWK 0-035052
Lot 120, Block 11, Plan 212-2788

DETAILS

- 9 ft. ceilings on the main floor
- Bonus room upstairs
- 5 pc ensuite bath with dual sinks and a stand up shower
- Splatter texture ceiling (as opposed to popcorn texture)
- Spindle railing on main and second floor creating an open staircase top to bottom
- Brilliant Home Technology (includes built-in control panel, video doorbell, smart Ecobee thermostat, programmable LED potlights lights, keyless entry, built-in Alexa capability, and access to the Brilliant Home app)
- White cabinets throughout (KitchenCraft Soho Thermofoil Satin White), finished to the ceiling in the kitchen, with contrasting black pulls
- Grey quartz countertops in kitchen and upstairs bathrooms with undermount sinks (Sudbury)
- Luxury vinyl plank flooring throughout main floor and wet areas (Divine Quest North Face)
- Stain-proof carpeting upstairs (Effortless Choice)
- 6 pc. Stainless Steel appliances with white high efficiency front load washer/dryer
- Triple pane, low-E argon filled Energy Star rated windows
- Heat recovery ventilator, high efficiency gas furnace and 80 gallon electric hot water tank
- 20X22 Garage pad
- 1 block away from Joey Moss K-9 Public School Opening Fall 2022

SASHA K

SASHA K

1564 SQ FT
3232 Kulay Way SW

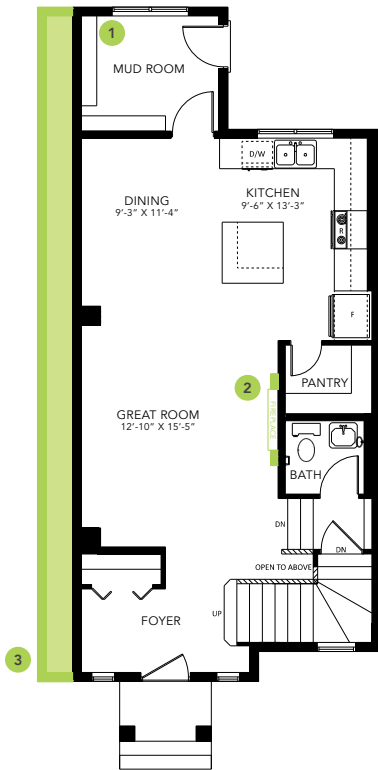


ONE AT KESWICK SHOWHOME

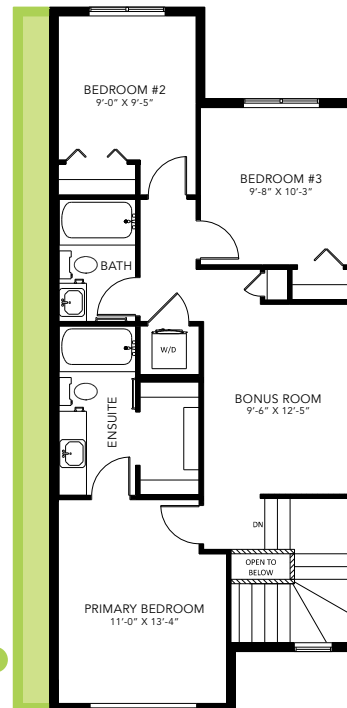
3411 Kulay Green SW, Edmonton
587-521-6580
oneatkeswick@bedrockhomes.ca

Job # KWK 0-035052
Lot 120, Block 11, Plan 212-2788

SASHA K



Main Floor
784 SQ FT



Second Floor
780 SQ FT