



ONE AT KESWICK SHOWHOME

3411 Kulay Green SW, Edmonton
587-521-6580
oneatkeswick@bedrockhomes.ca

Job # KWK 0-035046
Lot 114, Block 11, Plan 212-2788

DETAILS

- 9 ft. ceilings on the main floor
- Bonus room upstairs
- 4 pc. Ensuite with stand-up shower
- Splatter texture ceiling (as opposed to popcorn texture)
- Grey cabinets throughout (KitchenCraft Soho Thermofoil Satin Sleet), finished to the ceiling in the kitchen, with contrasting black pulls
- Grey quartz countertops in kitchen and upstairs bathrooms with undermount sinks (Flint)
- Luxury vinyl plank flooring throughout main floor and wet areas (Divine Quest into the wild)
- Stain-proof carpeting upstairs (True Harmony Eclipse)
- 6 pc. Stainless Steel appliances with white high efficiency front load washer/dryer
- Triple pane, low-E argon filled Energy Star rated windows
- Heat recovery ventilator, high efficiency gas furnace and 80 gallon electric hot water tank
- 20X22 Garage pad
- 1 block away from Joey Moss K-9 Public School Opening Fall 2022



BEDROCK
HOMES

ATHENA P

1660 SQ FT
3220 Kulay Way SW



ONE AT KESWICK SHOWHOME

3411 Kulay Green SW, Edmonton

587-521-6580

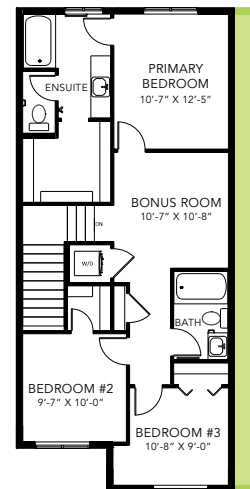
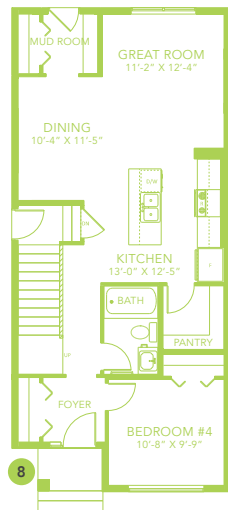
oneatkeswick@bedrockhomes.ca

Job # KWK 0-035046

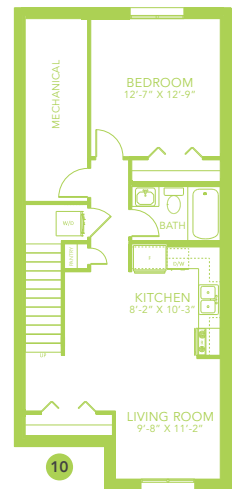
Lot 114, Block 11, Plan 212-2788



Main Floor
857 SQ FT



Second Floor
803 SQ FT



BUILT TO LAST \ BEDROCKHOMES.CA

SPEC 2022 - Bedrock Homes Ltd. reserves the right to modify floorplans, renderings, elevations and features in a continuing effort to improve product quality. Floorplans, specifications & prices are subject to change without notice. Errors & omissions exempt.