



BEDROCK
HOMES

SASHA P

1564 SQ FT
3218 Kulay Way SW



ONE AT KESWICK SHOWHOME

3411 Kulay Green SW, Edmonton
587-521-6580
oneatkeswick@bedrockhomes.ca

Job # KWK 0-035045
Lot 113, Block 11, Plan 212-2788

DETAILS

- 9 ft. ceilings on the main floor
- Bonus room upstairs
- Ensuite bathroom features a large vanity and a 5' shower upgrade
- Splatter texture ceiling (as opposed to popcorn texture)
- Spindle railing on main and second floor creating an open staircase top to bottom
- Grey cabinets throughout (KitchenCraft Soho Thermofoil Satin Sleet), finished to the ceiling in the kitchen, with contrasting black pulls
- Grey quartz countertops in kitchen and upstairs bathrooms with undermount sinks (Flint)
- Luxury vinyl plank flooring throughout main floor and wet areas (Divine Quest into the wild)
- Stain-proof carpeting upstairs (True Harmony Eclipse)
- 6 pc. Stainless Steel appliances with white high efficiency front load washer/dryer
- Triple pane, low-E argon filled Energy Star rated windows
- Heat recovery ventilator, high efficiency gas furnace and 80 gallon electric hot water tank
- 20X22 Garage pad
- 1 block away from Joey Moss K-9 Public School
- Includes smart home technology that features a video doorbell, Wi-Fi entrance deadbolt, smart thermostat and a smart home hub

BUILT TO LAST \\ **BEDROCKHOMES.CA**

SPEC 2022 - Bedrock Homes Ltd. reserves the right to modify floorplans, renderings, elevations and features in a continuing effort to improve product quality. Floorplans, specifications & prices are subject to change without notice. Errors & omissions exempt.

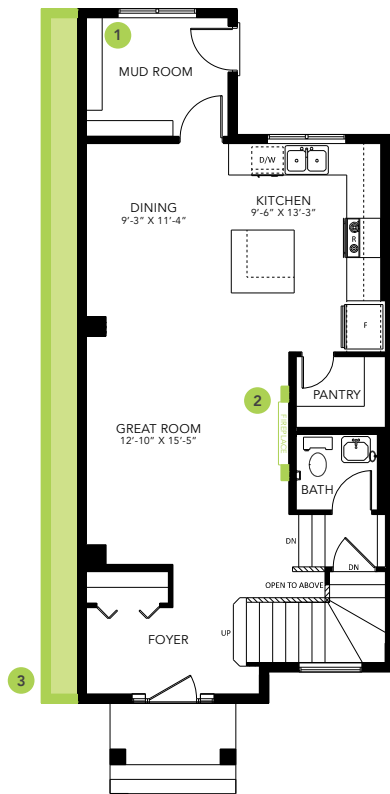


ONE AT KESWICK SHOWHOME

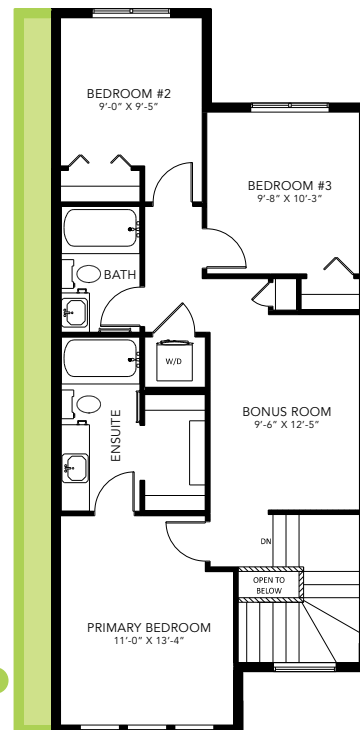
3411 Kulay Green SW, Edmonton
587-521-6580
oneatkeswick@bedrockhomes.ca

Job # KWK 0-035045
Lot 113, Block 11, Plan 212-2788

SASHA P



Main Floor
784 SQ FT



Second Floor
780 SQ FT