



BEDROCK
HOMES

MIA K

1584 SQ FT
Kulay Way SW



ONE AT KESWICKSHOWHOME

2745 Koshal Place SW, Edmonton

587-521-6580

oneatkeswick@bedrockhomes.ca

Job # KWK 0-035044
Lot 112, Block 11, Plan tbd

DETAILS

- 1 block away from Joey Moss K-9 Public School Opening Fall 2022
- 9 ft. ceilings on the main floor
- Splatter texture ceiling (as opposed to popcorn texture)
- 4 pc. Ensuite with dual sinks and a fiberglass stand-up shower
- Spindle railing on main and second floor creating an open staircase top to bottom
- Brilliant Home Technology (includes built-in control panel, video doorbell, smart Ecobee thermostat, programmable LED potlights lights, keyless entry, built-in Alexa capability, and access to the Brilliant Home app)
- Separate Side Entrance for future basement suite
- 50" fireplace in the great room that includes HDMI and power above the fireplace so no wires are visible to the TV
- White cabinets throughout (KitchenCraft Soho Thermofoil Satin White), finished to the ceiling in the kitchen, with contrasting black pulls
- Grey quartz countertops in kitchen and upstairs bathrooms with undermount sinks (Sudbury)
- Luxury vinyl plank flooring throughout main floor and wet areas (Divine Quest into the wild)
- Stain-proof carpeting upstairs (Effortless Choice Mindful)
- 6 pc. Stainless Steel appliances with white high efficiency front load washer/dryer
- Triple pane, low-E argon filled Energy Star rated windows
- Heat recovery ventilator, high efficiency gas furnace and 80 gallon electric hot water tank
- 20x22 garage pad

BUILT TO LAST \ \ **BEDROCKHOMES.CA**

SPEC 2021 - Bedrock Homes Ltd. reserves the right to modify floorplans, renderings, elevations and features in a continuing effort to improve product quality. Floorplans, specifications & prices are subject to change without notice. Errors & omissions exempt.



BEDROCK
HOMES

MIA K

1584 SQ FT
Kulay Way SW



ONE AT KESWICK SHOWHOME

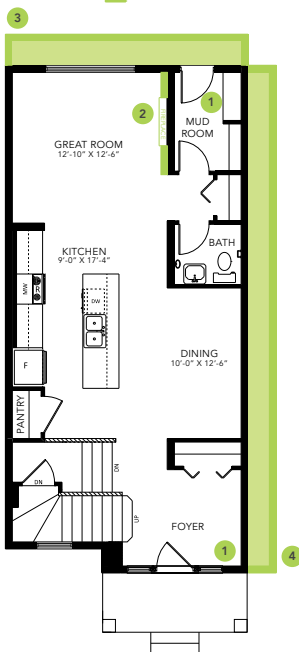
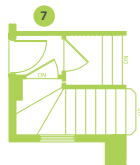
2745 Koshal Place SW, Edmonton

587-521-6580

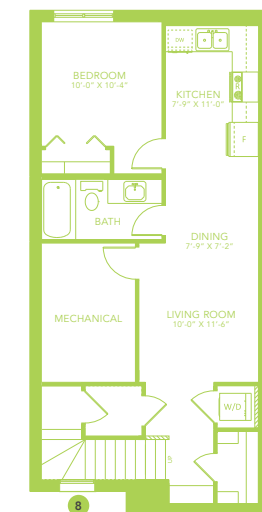
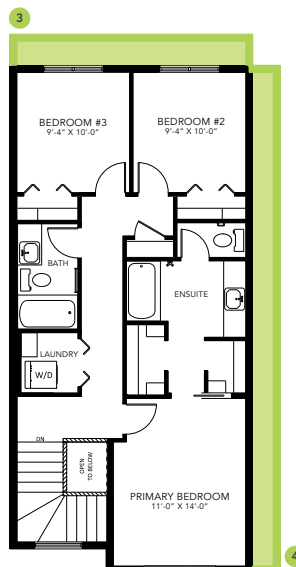
oneatkeswick@bedrockhomes.ca

Job # KWK 0-035044

Lot 112, Block 11, Plan tbd



Main Floor
824 SQ FT



Second Floor
760 SQ FT

BUILT TO LAST \ BEDROCKHOMES.CA

SPEC 2021 - Bedrock Homes Ltd. reserves the right to modify floorplans, renderings, elevations and features in a continuing effort to improve product quality. Floorplans, specifications & prices are subject to change without notice. Errors & omissions exempt.