



**BEDROCK**  
HOMES

# DAYA P

1493 SQ FT  
Kulay Way SW



## ONE AT KESWICKSHOWHOME

3411 Kulay Green SW, Edmonton  
587-521-6580  
oneatkeswick@bedrockhomes.ca

Job # KWK-0-035042  
Lot 110, Block 11, Plan 212-2788

## DETAILS

- 1 block away from Joey Moss K-9 Public School
- Flex room on main floor
- Smart Home Technology includes video doorbell, smart thermostat, keyless entry and built-in Alexa capability.
- 9 ft. ceilings on the main floor
- LED pot lights throughout
- Splatter texture ceiling (as opposed to popcorn texture)
- 50" fireplace in the great room that includes HDMI and power above the fireplace so no wires are visible to the TV
- Spindle railing on main floor
- Ensuite bathroom features a large vanity with dual sinks and a 5' shower
- White cabinetry throughout (KitchenCraft Soho Thermofoil Satin White), finished to the ceiling in the kitchen, with contrasting black pulls
- Grey quartz countertops in kitchen and upstairs bathrooms with undermount sinks (Sudbury)
- Luxury vinyl plank flooring throughout main floor and wet areas (Divine Quest North Face)
- Stain-proof carpeting upstairs (Effortless Choice Mindful)
- 6 pc. Stainless Steel appliances with white high efficiency front load washer/dryer
- Triple pane, low-E argon filled Energy Star rated windows
- Heat recovery ventilator, high efficiency gas furnace and 50 gallon electric hot water tank
- 20 x 22 Rear garage pad - ask us to build your garage for you!

DAYA P

BUILT TO LAST \ \ **BEDROCKHOMES.CA**

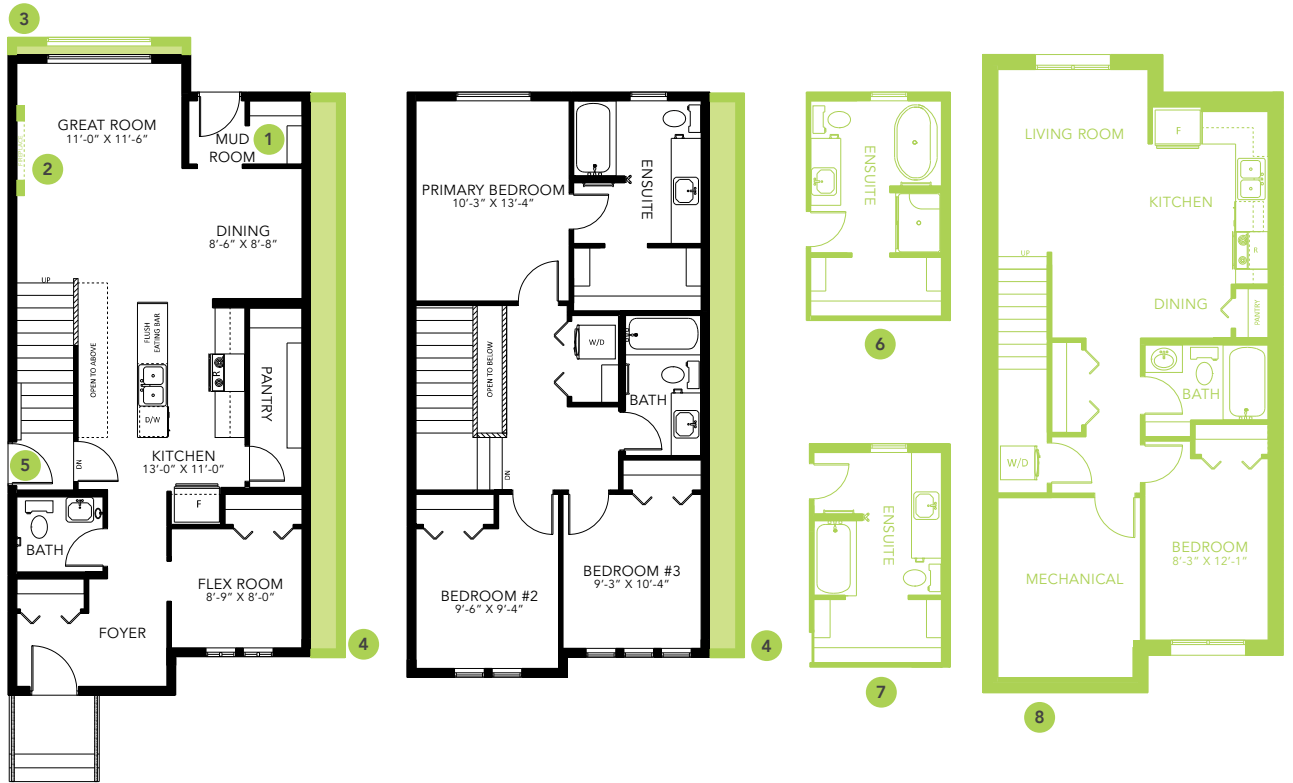
SPEC 2021 - Bedrock Homes Ltd. reserves the right to modify floorplans, renderings, elevations and features in a continuing effort to improve product quality. Floorplans, specifications & prices are subject to change without notice. Errors & omissions exempt.



## ONE AT KESWICK SHOWHOME

3411 Kulay Green SW, Edmonton  
587-521-6580  
oneatkeswick@bedrockhomes.ca

Job # KWK-0-035042  
Lot 110, Block 11, Plan 212-2788



**Main Floor**  
808 SQ FT

**Second Floor**  
685 SQ FT

DAYA P