



## ONE AT KESWICKSHOWHOME

2745 Koshal Place SW, Edmonton  
587-521-6580  
oneatkeswick@bedrockhomes.ca

Job # KWK 0-035034  
Lot 19, Block 21, Plan 222-0111

## DETAILS

- 1 block away from Joey Moss K-9 Public School Opening Fall 2022
- Pie shaped lot with large back yard
- 9 ft. ceilings on the main floor
- Bonus room upstairs
- Spindle railing on main and second floor creating an open staircase top to bottom
- Splatter texture ceiling (as opposed to popcorn texture)
- LED pot lights throughout
- Ensuite bath features dual sinks in a large vanity with a stand up shower and huge walk in closet
- Kitchen at the back of the home with the sink under a window looking to the backyard
- 50" fireplace in the great room that includes HDMI and power above the fireplace so no wires are visible to the TV
- Grey cabinets throughout (KitchenCraft Soho Thermofoil Satin Sleet), finished to the ceiling in the kitchen, with contrasting black pulls and soft close action
- Grey quartz countertops in kitchen and upstairs bathrooms with undermount sinks (Flint)
- Luxury vinyl plank flooring throughout main floor and wet areas (Divine Quest Into the Wild)
- Stain-proof carpeting upstairs (True Harmony Eclipse)
- 6 pc. Stainless Steel appliances with white high efficiency front load washer/dryer
- Triple pane, low-E argon filled Energy Star rated windows
- Heat recovery ventilator, high efficiency gas furnace and 80 gallon electric hot water tank
- 6 pc. Stainless Steel appliances with white high efficiency front load washer/dryer



**BEDROCK**  
HOMES

# RUBY P

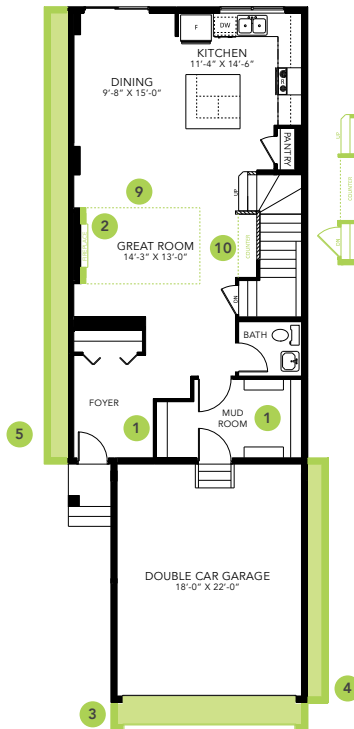
1928 SQ FT  
3341 Kulay Way SW



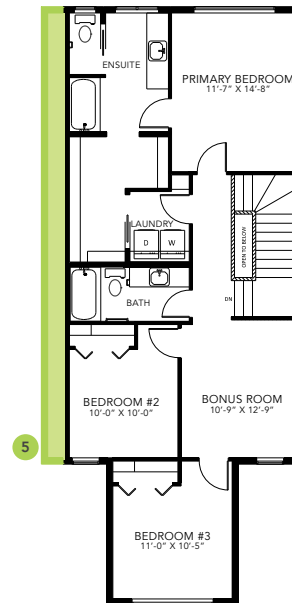
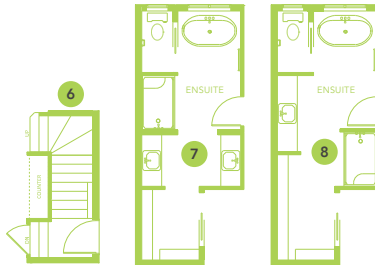
## ONE AT KESWICK SHOWHOME

2745 Koshal Place SW, Edmonton  
587-521-6580  
oneatkeswick@bedrockhomes.ca

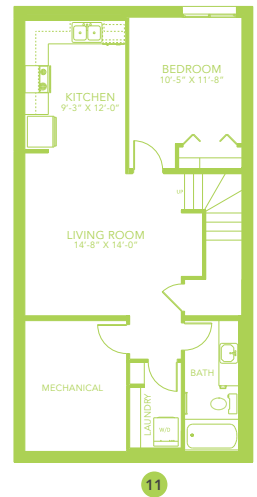
Job # KWK 0-035034  
Lot 19, Block 21, Plan 222-0111



**Main Floor**  
924 SQ FT



**Second Floor**  
1004 SQ FT



BUILT TO LAST \ BEDROCKHOMES.CA

SPEC 2021 - Bedrock Homes Ltd. reserves the right to modify floorplans, renderings, elevations and features in a continuing effort to improve product quality. Floorplans, specifications & prices are subject to change without notice. Errors & omissions exempt.