



ONE AT KESWICK SHOWHOME

2745 Koshal Place SW, Edmonton
587-521-6580
oneatkeswick@bedrockhomes.ca

Job # KWK 0-035025
Lot 3, Block 22, Plan 212-1825

DETAILS

- 1 block away from Joey Moss K-9 Public School Opening Fall 2022
- Side entrance for future legal suite
- Flex room on main floor
- Bonus room upstairs
- Brilliant Home Technology (includes built-in control panel, video doorbell, smart Ecobee thermostat, programmable LED potlights lights, keyless entry, built-in Alexa capability, and access to the Brilliant Home app)
- 9 ft. ceilings on the main floor
- LED pot lights throughout
- Spindle railing on main floor
- Splatter texture ceiling (as opposed to popcorn texture)
- 3 pc. Ensuite with fiberglass stand-up shower and huge walk-in closet
- Navy cabinets throughout (KitchenCraft Soho Thermofoil Satin Starless), finished to the ceiling in the kitchen, with stainless steel pulls
- White quartz countertops in kitchen and upstairs bathrooms with undermount sinks (Crystal Crescent)
- Luxury vinyl plank flooring throughout main floor and wet areas (Divine Quest Miss Sunshine)
- Stain-proof carpeting upstairs (True Harmony Silverado)
- 6 pc. Stainless Steel appliances with white high efficiency front load washer/dryer
- Triple pane, low-E argon filled Energy Star rated windows
- Heat recovery ventilator, high efficiency gas furnace and 80 gallon electric hot water tank
- Rear garage pad

ATHENA P

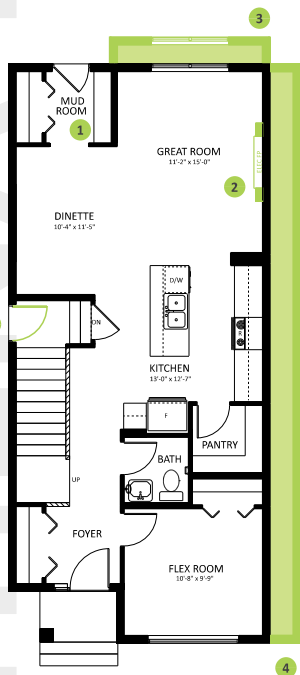
1660 SQ FT
3374 Kulay Way SW



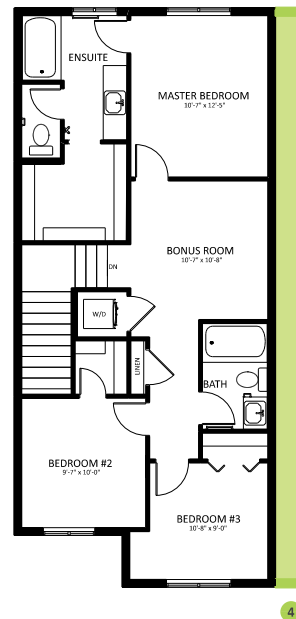
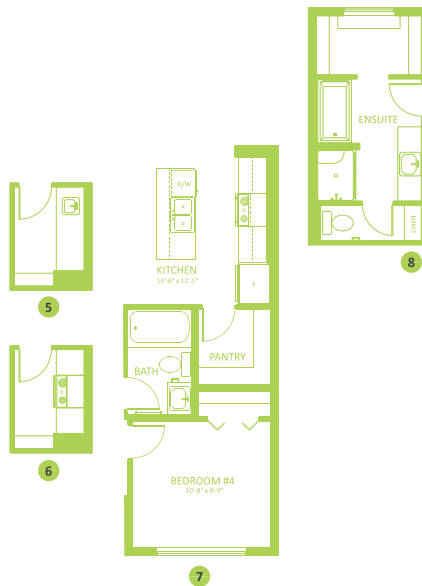
ONE AT KESWICK SHOWHOME

2745 Koshal Place SW, Edmonton
587-521-6580
oneatkeswick@bedrockhomes.ca

Job # KWK 0-035025
Lot 3, Block 22, Plan 212-1825



Main Floor
857 SQ FT



Second Floor
803 SQ FT

