

RUBY P

1928 SQ FT
2362 Kelly Circle SW



ONE AT KESWICK SHOWHOME

2745 Koshal Place SW, Edmonton
587-521-6580
oneatkeswick@bedrockhomes.ca

Job # KWK 0-034852
Lot 59A, Block 12, Plan 202-0742

DETAILS

- 1 block away from the 1 km. long pond and walking trail
- Two K-9 schools opening Fall 2022
- Brilliant Home Technology (includes built-in control panel, video doorbell, smart Ecobee thermostat, programmable LED potlights lights, built-in Alexa capability, and access to the Brilliant Home app)
- 9 ft. ceilings on the main floor
- LED pot lights throughout
- Spindle railing
- Electric fireplace in the living room
- Frosted pantry door
- 2nd sink in the ensuite
- Trendy navy cabinets throughout (KitchenCraft Soho Starless), finished to the ceiling in the kitchen
- Marbled white quartz countertops in kitchen and upstairs bathrooms with undermount sinks (Baystone Frozen Tundra)
- Luxury vinyl plank flooring throughout main floor and wet areas (Divine Quest Miss Sunshine)
- Stain-proof carpeting upstairs (Mohawk True Harmony Silverado)
- 6 pc. Stainless Steel appliances with white high efficiency front load washer/dryer
- Triple pane, low-E argon filled Energy Star rated windows
- Heat recovery ventilator, high efficiency gas furnace and 80 gallon hot water tank

RUBY P

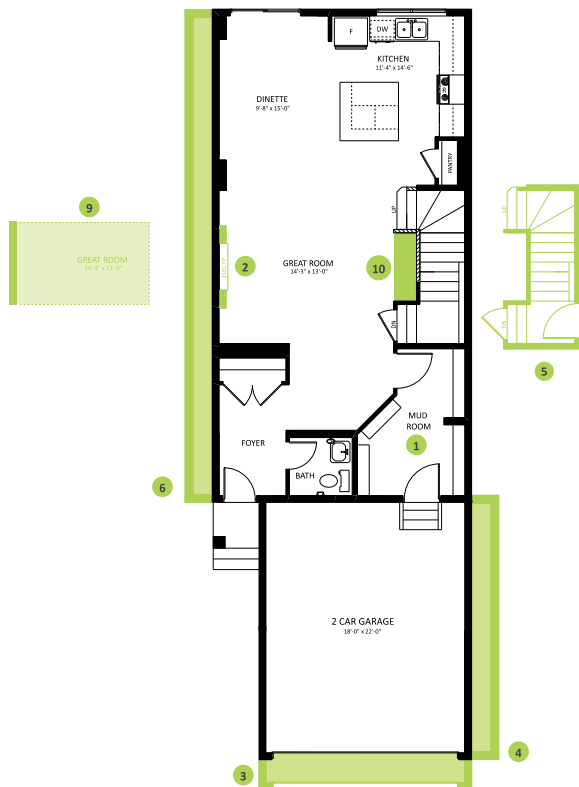
1928 SQ FT
2362 Kelly Circle SW



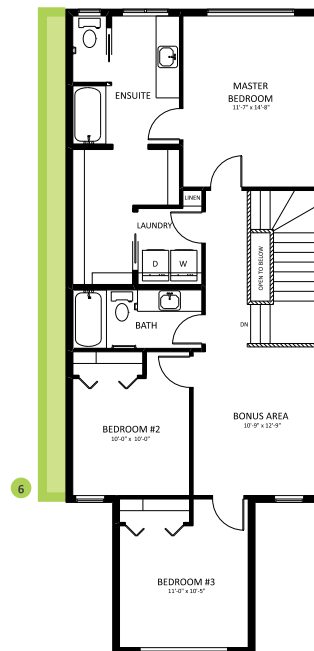
ONE AT KESWICK SHOWHOME

2745 Koshal Place SW, Edmonton
587-521-6580
oneatkeswick@bedrockhomes.ca

Job # KWK 0-034852
Lot 59A, Block 12, Plan 202-0742



Main Floor
858 SQ FT



Second Floor
903 SQ FT

