



## ONE AT KESWICK SHOWHOME

2745 Koshal Place SW, Edmonton  
587-521-6580  
oneatkeswick@bedrockhomes.ca

Job # KWK-0-034757  
Lot 21, Block 7, Plan 202-1784

## DETAILS

- 1 block away from the 1 km long pond and walking trail
- Two K-9 schools opening Fall 2022
- West facing backyard
- Brilliant Home Technology (includes built-in control panel, video doorbell, smart Ecobee thermostat, programmable LED lights, built-in Alexa capability, and access to the Brilliant Home app)
- 9 ft. foundation walls
- 9 ft. ceilings on the main floor
- Garage floor drain
- LED pot lights throughout
- Splatter texture ceiling
- Linear electric fireplace
- Spindle railing
- Fully tiled shower walls with barn door in the ensuite, and double sinks 41" cabinets in kitchen, pot, and pan drawers, with soft-close throughout
- Quartz countertops in kitchen and upstairs bathrooms with undermount sinks
- Luxury vinyl plank flooring throughout the main floor and wet areas
- Stain-proof carpeting upstairs
- 6 pc. Stainless Steel appliances with white high-efficiency front load washer/dryer
- Triple pane, low-E argon-filled Energy Star rated windows
- Heat recovery ventilator, high-efficiency gas furnace, and 50-gallon gas-powered hot water tank

# ELENA K

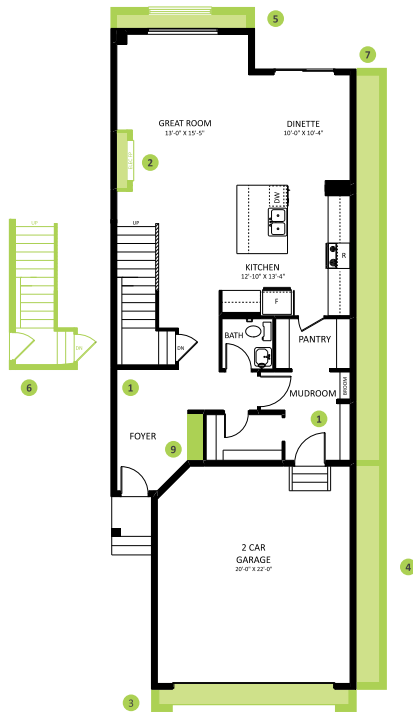
2088 SQ FT  
2759 Koshal Place SW



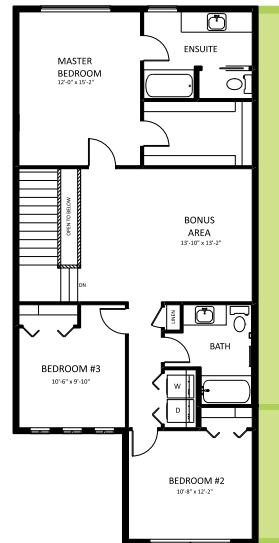
## ONE AT KESWICK SHOWHOME

2745 Koshal Place SW, Edmonton  
587-521-6580  
oneatkeswick@bedrockhomes.ca

Job # KWK-0-034757  
Lot 21, Block 7, Plan 202-1784



**Main Floor**  
1011 SQ FT



**Second Floor**  
1077 SQ FT

