

SEVILLE K

1995 SQ FT
2740 Koshal Place SW



ONE AT KESWICK SHOWHOME

2745 Koshal Place SW, Edmonton
587-521-6580
oneatkeswick@bedrockhomes.ca

Job # KWK-0-034756
Lot 13, Block 6, Plan 202-1784

DETAILS

- 1 block away from the 1 km long pond and walking trail
- Two K-9 schools opening Fall 2022
- Pie shaped lot
- Triple attached garage (double wide with tandem)
- Brilliant Home Technology (includes built-in control panel, video doorbell, smart Ecobee thermostat, programmable LED lights, built-in Alexa capability, and access to the Brilliant Home app)
- 9 ft. foundation walls
- 9 ft. ceilings on the main floor
- Garage floor drain
- LED pot lights throughout
- Splatter texture ceiling
- Linear electric fireplace
- Spindle railing
- Upgraded 4 pc. Ensuite with double sinks and soaker tub
- 41" cabinets in kitchen, pot and pan drawers, with soft-close throughout
- Quartz countertops in kitchen and upstairs bathrooms with undermount sinks
- Luxury vinyl plank flooring throughout the main floor and wet areas
- Stain-proof carpeting upstairs
- 6 pc. Stainless Steel appliances with white high-efficiency front load washer/dryer
- Triple pane, low-E argon-filled Energy Star rated windows
- Heat recovery ventilator, high-efficiency gas furnace, and 50-gallon gas-powered hot water tank

SEVILLE K

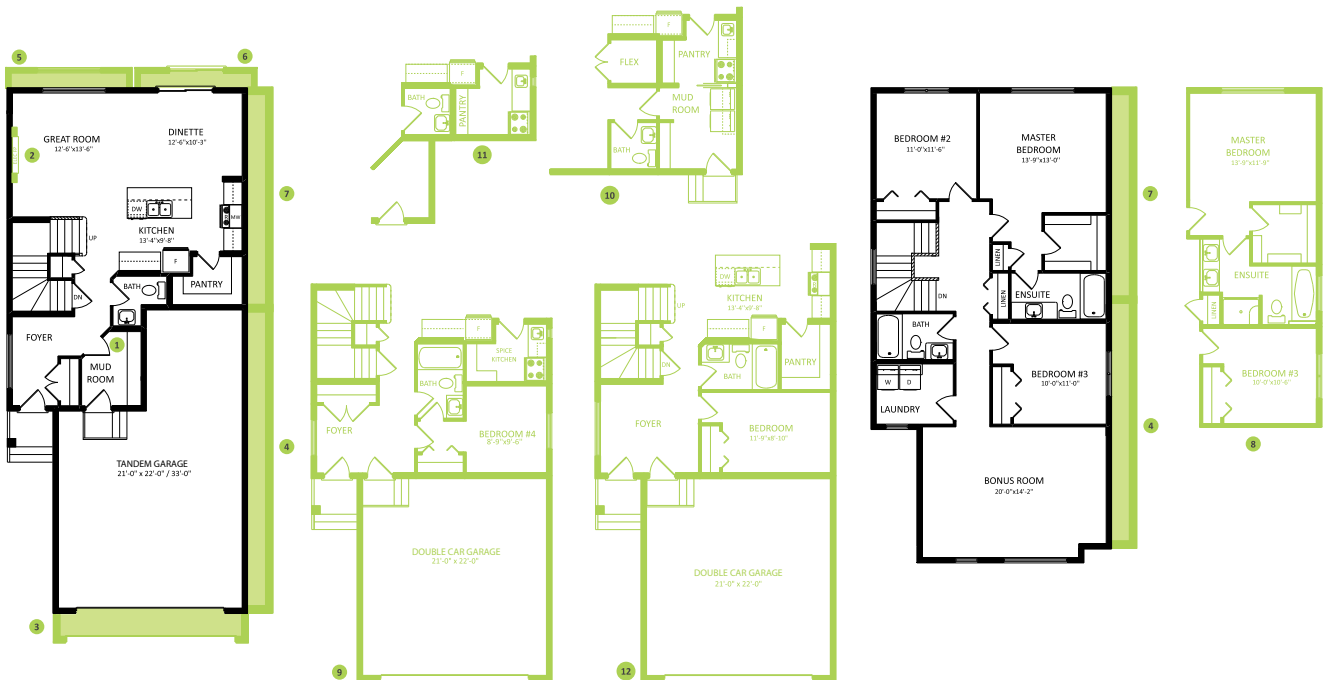
2432 SQ FT
2740 Koshal Place SW



ONE AT KESWICK SHOWHOME

2745 Koshal Place SW, Edmonton
587-521-6580
oneatkeswick@bedrockhomes.ca

Job # KWK-0-034756
Lot 13, Block 6, Plan 202-1784



Main Floor
789 SQ FT

Second Floor
1206 SQ FT