



## ONE AT KESWICK SHOWHOME

2113 Koshal Way SW, Edmonton  
587.521.6580  
oneatkeswick@bedrockhomes.ca

Job # KWK-0-034741  
Lot 49A, Block 12, Plan 202-0742

## DETAILS

- 2 blocks away from the 1 km stormwater pond and walking trail
- Two K-9 schools opening Fall 2022
- 9' ceilings on the main floor
- LED pot lights throughout
- Upgraded splatter texture ceiling throughout (as opposed to popcorn ceiling)
- Electric fireplace
- Spindle railing on main and second floor
- Upgraded 4 piece ensuite option
- White 41" cabinets in kitchen, pot and pan drawers, with soft close throughout (KitchenCraft Maple Tamarind Alabaster)
- Grey quartz countertops in kitchen and upstairs bathrooms with undermount sinks (Hanstone Uptown Grey)
- White ceramic subway tile backsplash in kitchen (Tierra Sol 4x12 Bevel Edge Arctic White Gloss)
- Luxury vinyl plank flooring throughout main floor and wet areas (Divine Quest Miss Sunshine)
- Stain-proof carpeting upstairs (Mohawk True Harmony Silverado)
- 6 piece stainless steel appliances with white high efficiency front load washer/dryer
- Triple pane, low-E argon filled Energy Star rated windows
- Heat recovery ventilator, high efficiency gas furnace and 50 gallon hot water tank

# RUBY K

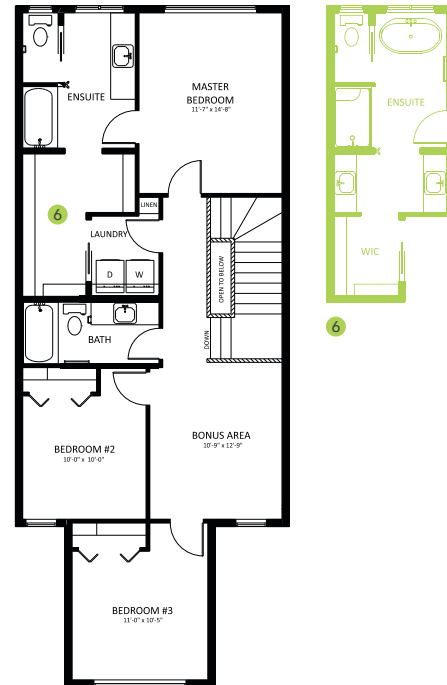
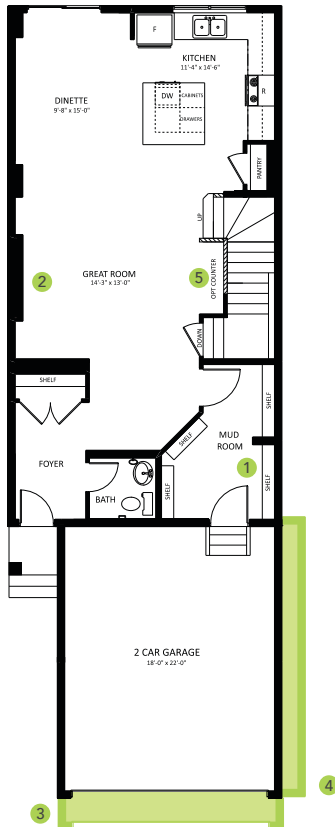
1928 SQ FT  
2382 Kelly Circle



## ONE AT KESWICK SHOWHOME

2113 Koshal Way SW, Edmonton  
587.521.6580  
oneatkeswick@bedrockhomes.ca

Job # KWK-0-034741  
Lot 49A, Block 12, Plan 202-0742



RUBY K