

# Rundle P

1430 SQ FT

2359 Kelly Circle SW



- 3 bedrooms, 2.5 baths
- 2nd floor laundry
- 9' ceilings on main floor
- Upgrade to splatter texture on ceilings throughout
- Kitchen craft woodgrain chillagoe cabinets with 41" upgraded upper cabinets
- Hanstone fusion quartz countertops with undermount sinks
- Linear electric fireplace
- 5 Samsung stainless steel appliances
- Luxury vinyl plank floors in divine quest endless summer
- Triple pane low e argon filled energy star rated windows
- Heat recovery ventilator, high efficiency furnace and hot water tank

### One at Keswick Showhome

2113 Koshal Way SW, Edmonton

587.521.6580

[oneatkeswick@bedrockhomes.ca](mailto:oneatkeswick@bedrockhomes.ca)

Job # KWK-0-034506 Lot 46, Block 13, Plan 182-3259

### Notes:

---

---

---

---

---

---

---

[bedrockhomes.ca](http://bedrockhomes.ca)

VISIT US AT ANY OF OUR SHOWHOMES!

Monday - Thursday 3-8pm, Weekends & Holidays 12-5PM

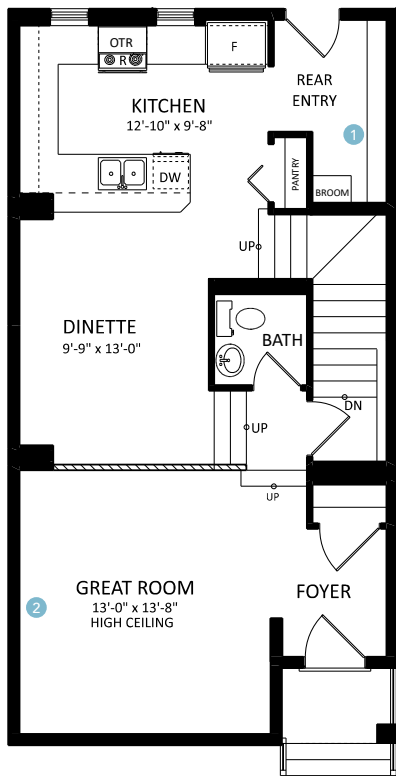


**Rundle P**  
**1430 SQ FT**  
 2359 Kelly Circle SW

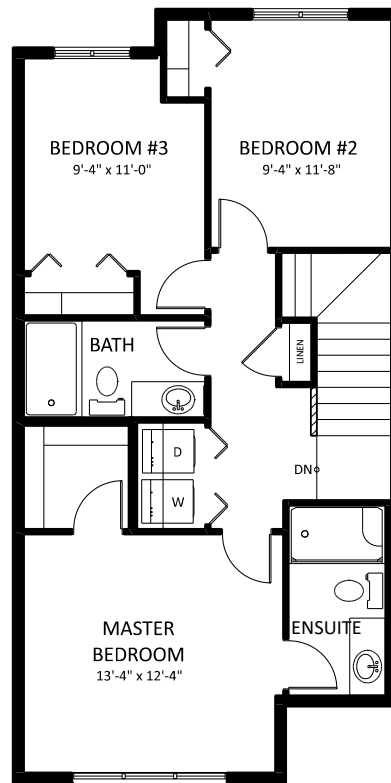


**One at Keswick Showhome**  
 2113 Koshal Way SW, Edmonton  
 587.521.6580  
 oneatkeswick@bedrockhomes.ca

Job # KWK-0-034506 Lot 46, Block 13, Plan 182-3259



Main Floor  
 736 sqft



Second Floor  
 694 sqft

[bedrockhomes.ca](http://bedrockhomes.ca)

VISIT US AT ANY OF OUR SHOWHOMES!  
 Monday - Thursday 3-8pm, Weekends & Holidays 12-5PM

