



## ONE AT KESWICK SHOWHOME

2113 Koshal Way SW, Edmonton  
587.521.6580  
[oneatkeswick@bedrockhomes.ca](mailto:oneatkeswick@bedrockhomes.ca)

Job # KWK-0-034505  
Lot 45, Block 13, Plan 182-3259

## DETAILS

- 3 bedrooms, 2.5 baths
- Second floor laundry
- 9' ceilings on main floor
- Upgrade to splatter texture on ceilings throughout
- Thermofoil convery saticn sleet cabinets with 41" upgraded upper cabinets
- Caesarstone Ocean Foam quartz countertops with undermount sinks throughout
- Linear electric fireplace
- 5 Samsung stainless steel appliances
- Luxury vinyl plank floors in Divine Quest Into The Wild
- Triple pane low E Argon filled Energy Star rated windows
- Heat recovery ventilator, high efficiency furnace, and hot water tank

# CASCADE K

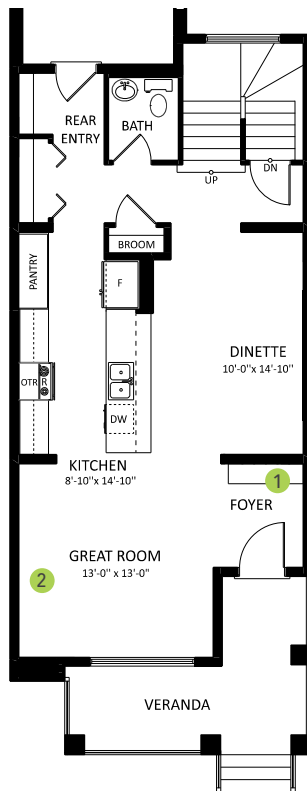
1605 SQ FT  
2361 Kelly Circle SW



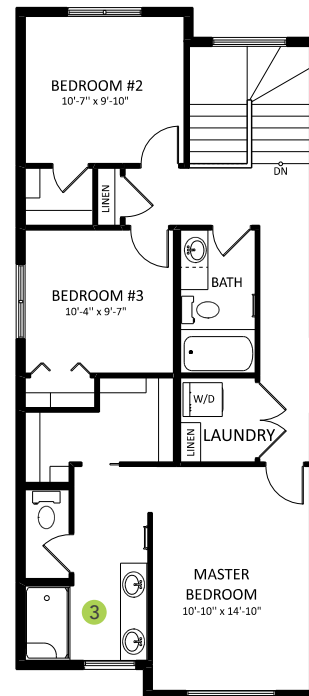
## ONE AT KESWICK SHOWHOME

2113 Koshal Way SW, Edmonton  
587.521.6580  
oneatkeswick@bedrockhomes.ca

Job # KWK-0-0345045  
Lot 45, Block 13, Plan 182-3259



**Main Floor**  
782 SQ FT



**Second Floor**  
823 SQ FT

