



ONE AT KESWICK SHOWHOME

2113 Koshal Way SW, Edmonton
587.521.6580
oneatkeswick@bedrockhomes.ca

Job # KWK-0-034504
Lot 44, Block 13, Plan 182-3259

Over
\$17,500
in Designer
Upgrades

DETAILS

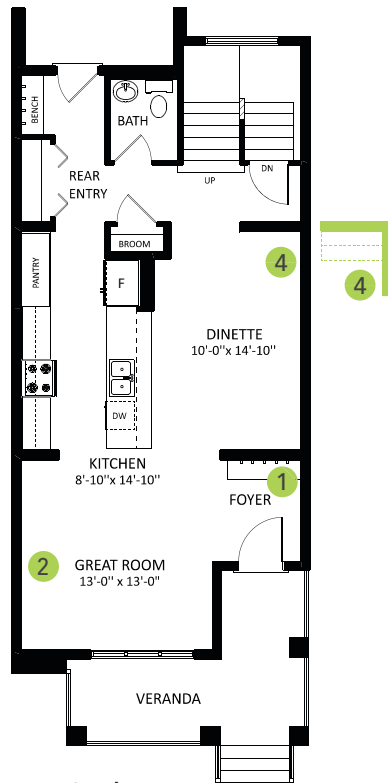
- 3 bedrooms, 2.5 baths
- Second floor laundry
- 9' ceilings on main floor
- Upgrade to splatter texture on ceilings throughout
- Kitchen Craft Woodgrain Ore cabinet with 41" upgraded upper cabinets
- Hanstone Metropolitan quartz countertops with undermount sinks throughout
- Linear electric fireplace
- 5 Samsung stainless steel appliances
- Luxury vinyl plank floors in Divine Quest Into The Wild
- Triple pane low E Argon filled Energy Star rated windows
- Heat recovery ventilator, high efficiency furnace, and hot water tank



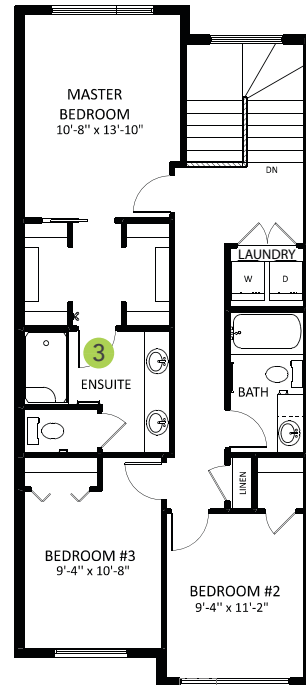
ONE AT KESWICK SHOWHOME

2113 Koshal Way SW, Edmonton
587.521.6580
oneatkeswick@bedrockhomes.ca

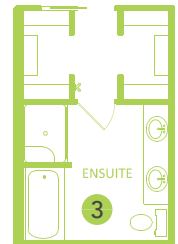
Job # KWK-0-034504
Lot 44, Block 13, Plan 182-3259



Main Floor
782 SQ FT



Second Floor
823 SQ FT



CASCADE P