

1810 SQ FT
2320 Kelly Circle SW



ONE AT KESWICK SHOWHOME

2113 Koshal Way SW, Edmonton
587.521.6580
oneatkeswick@bedrockhomes.ca

Job # KWK -0-034405
Lot 76, Block 12, Plan 192-0465

DETAILS

- West facing backyard
- Steps from the 1 km pond and walking path
- Large second floor bonus room
- 9' ceilings on main floor
- 41" light upper and dark lower cabinets (Coventry Thermofoil Woodgrain Satin Sleet uppers / Coventry Thermofoil Woodgrain Ore lowers) in kitchen, with pot and pan drawers
- Ceramic tile backsplash in kitchen, subway pattern
- Pot lights in the kitchen
- White quartz countertops with undermount sinks throughout (Caesarstone Ocean Foam)
- Grey luxury vinyl plank floors (Divine Quest Endless Summer)
- SmartStrand stain-proof carpet upstairs (Mohawk True Harmony Silverado)
- Porcelain tile tub and shower surround in ensuite and main bath
- Upgraded splatter texture on ceilings throughout
- 6 Samsung stainless steel appliances
- Triple pane low E Argon filled Energy Star rated windows
- Heat Recovery Ventilator, high efficiency furnace and 50 gal hot water tank
- Second floor laundry
- 3 bedrooms, 2.5 baths

SAPPHIRE P

1810 SQ FT
2320 Kelly Circle SW



ONE AT KESWICK SHOWHOME

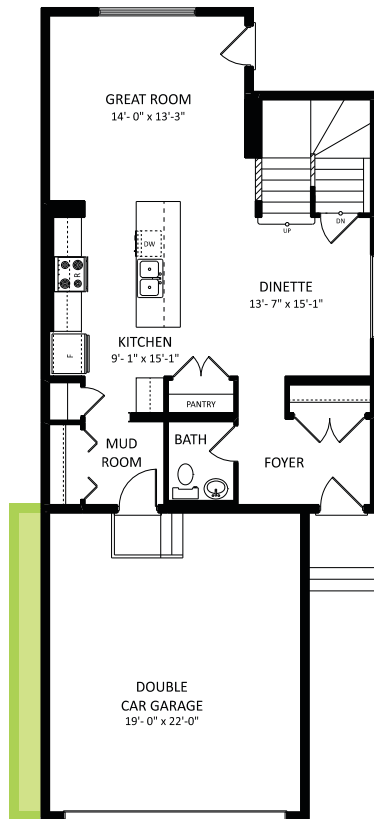
2113 Koshal Way SW, Edmonton

587.521.6580

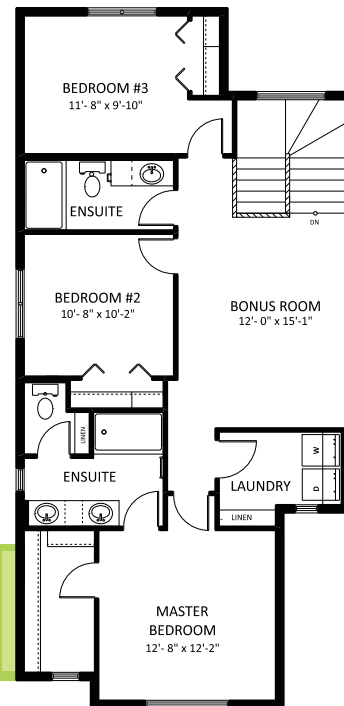
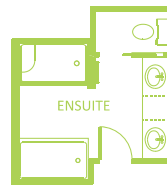
oneatkeswick@bedrockhomes.ca

Job # KWK -0-034405

Lot 76, Block 12, Plan 192-0465



Main Floor
810 SQ FT



Second Floor
1000 SQ FT