

AMELIA P

1708 SQ FT
2330 Kelly Circle SW



ONE AT KESWICK SHOWHOME

2113 Koshal Way SW, Edmonton
587.521.6580
oneatkeswick@bedrockhomes.ca

Job # KWK-0-34402
Lot 71, Block 12, Plan 192-0465

Over
\$18,700
in Designer
Upgrades

DETAILS

- 3 bedrooms, 2.5 baths
- Second floor laundry
- 9' ceilings on main floor
- Coventry Thermofoil Satin Sleet colored cabinets with 41" upper cabinets
- Caesarstone Ocean Foam 6141 quartz countertops with undermount sinks throughout
- Paint grade railing with metal spindles
- Upgraded splatter texture on ceilings throughout
- Upgraded shower and glossy tiling in ensuite
- Upgraded mosaic glass tile in kitchen
- Luxury vinyl plank floors in Divine Quest Into The Wild color
- 5 Samsung stainless steel appliances included
- Second floor full sized bonus room
- Triple pane low E Argon filled Energy Star rated windows
- Heat recovery ventilator, high efficiency furnace and hot water tank
- 344.93 m² lot

AMELIA P

1708 SQ FT
2330 Kelly Circle SW



ONE AT KESWICK SHOWHOME

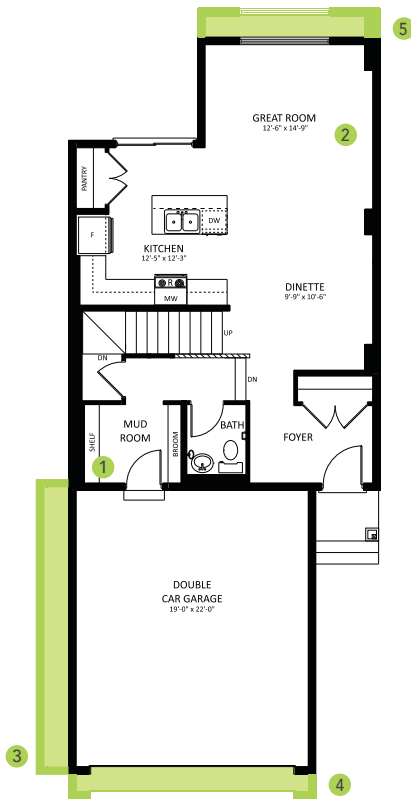
2113 Koshal Way SW, Edmonton

587.521.6580

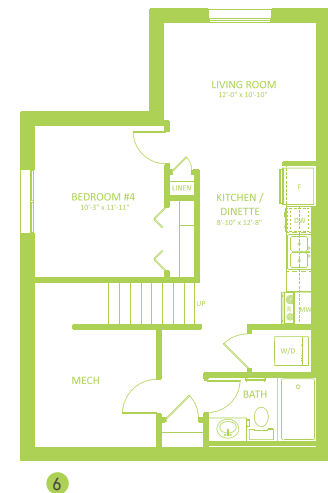
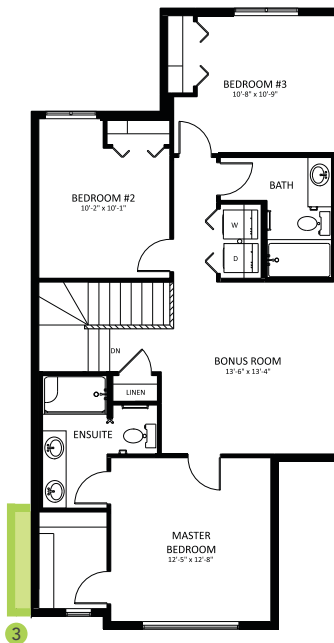
oneatkeswick@bedrockhomes.ca

Job # KWK-0-34402

Lot 71, Block 12, Plan 192-0465



Main Floor
760 SQ FT



Second Floor
948 SQ FT